

# Gemini

## How to Configure Access to Gemini

Gemini Access Configuration

Issue 1, 10th November 2004

David Williamson

Approved \_\_\_\_\_  
( )

Date \_\_\_\_\_

Approved \_\_\_\_\_  
( )

Date \_\_\_\_\_

Approved \_\_\_\_\_  
( )

Date \_\_\_\_\_



## CONTENTS

1	INTRODUCTION .....	1
1.1	Purpose and Scope .....	1
1.2	Definitions .....	1
1.3	Related Documents .....	1
1.3.1	Project Documents: .....	1
1.3.2	External Documents: .....	1
1.3.3	NGT Business Documents: .....	1
1.3.4	IS Documents:.....	1
2	CONFIGURATION DETAILS .....	2
2.1	Networking Changes for Access to Gemini Production .....	2
2.1.1	General.....	2
2.1.2	Screen Service.....	2
2.1.3	API Service.....	2
2.2	Use of the Citrix Client .....	2
2.3	Disaster Recovery (D/R) Arrangements.....	2
2.4	Confirming Connectivity .....	3
2.4.1	Screen Service.....	3
2.4.2	API Service.....	6
	DOCUMENT STATUS.....	7



# 1 INTRODUCTION

## 1.1 Purpose and Scope

This document details the configuration necessary on the part of external parties in order to access the Gemini application hosted by NGT. It covers the following topics:

- Networking changes required to access the Gemini production service;
- Use of the Citrix client;
- Disaster Recovery (D/R) arrangements.

Procedures to obtain and administer Gemini user identifiers are **not** within the scope of this document.

Set up instructions to access Gemini via the use of the CFTM file transfer, see the “CFTM File Transfer User Guide” in the UK-Link Supplementary Documents manual.

## 1.2 Definitions

N/A

## 1.3 Related Documents

N/A

### 1.3.1 Project Documents:

N/A

### 1.3.2 External Documents:

N/A

### 1.3.3 NGT Business Documents:

N/A

### 1.3.4 IS Documents:

N/A

## 2 CONFIGURATION DETAILS

### 2.1 Networking Changes for Access to Gemini Production

#### 2.1.1 General

- Gemini runs two distinct services, a screen service and an Application Programming Interface (API) service.
- Both services are accessed via the private network connecting NGT with external parties holding shipper or supplier licenses that is known as the IX Network, or IXN for short.
- Both services are accessed via the https protocol.

#### 2.1.2 Screen Service

- You must use port 443 to submit requests to the Gemini screen service. Therefore, if you connect to the IXN via a Firewall you **must** have this port open.
- You **must** resolve the FQDN gemini-ix-prod-citrix.transco.co.uk to the IP address 194.129.160.17 **on your network**. NGT does not provide a DNS service for access via the IXN.
- Requests to 194.129.160.17 must be routed to NGT via the IXN.

#### 2.1.3 API Service

- You must use port 4445 to submit requests to the Gemini API service. Therefore, if you connect to the IXN via a Firewall you **must** have this port open.
- You **must** resolve the FQDN gemini-ix-prod.transco.co.uk to the IP address 194.129.160.25 **on your network**. NGT does not provide a DNS service for access via the IXN.
- Requests to 194.129.160.25 should be routed to NGT via the IXN.

### 2.2 Use of the Citrix Client

The Gemini screen service must be accessed via the Citrix web client. This is available for download from the Gemini MetaFrame login page, see section 2.4.

Gemini has been tested using version 7.1 of the Citrix web client. This is the version that is available for download from the Gemini MetaFrame login page. You can download later versions of the Citrix web client from the Citrix web site at <http://www.citrix.com>

At the time of writing there are no **known** problems associated with accessing Gemini via versions of the Citrix web client from version 6.3 and above, including versions later than 7.1.

### 2.3 Disaster Recovery (D/R) Arrangements

NGT has arrangements in place to host Gemini at an alternative location in the event of loss of its primary site. In this eventuality you will have to put in place alternative networking arrangements to continue to access Gemini. NGT will notify external parties via the usual means if it invokes these procedures.

The alternative arrangements required on your part are as follows:

- The Gemini screen service will be hosted at 194.129.160.19 (c/f 194.129.160.17 for the production service). You **must** resolve the FQDN gemini-ix-prod-citrix-dr.transco.co.uk to 194.129.160.19 **on your network**.

- The Gemini API service will be hosted at 194.129.160.30 (c/f 194.129.160.25 for the production service). However, you will continue to use the same FQDN (gemini-ix-prod.transco.co.uk) to access the service. This dictates that you cannot have simultaneous access configured to both production and D/R API services, as the FQDN resolutions are mutually exclusive.

All other arrangements (https protocol, routing via the IXN, ports, etc.) are the same as for the production services.

## 2.4 Confirming Connectivity

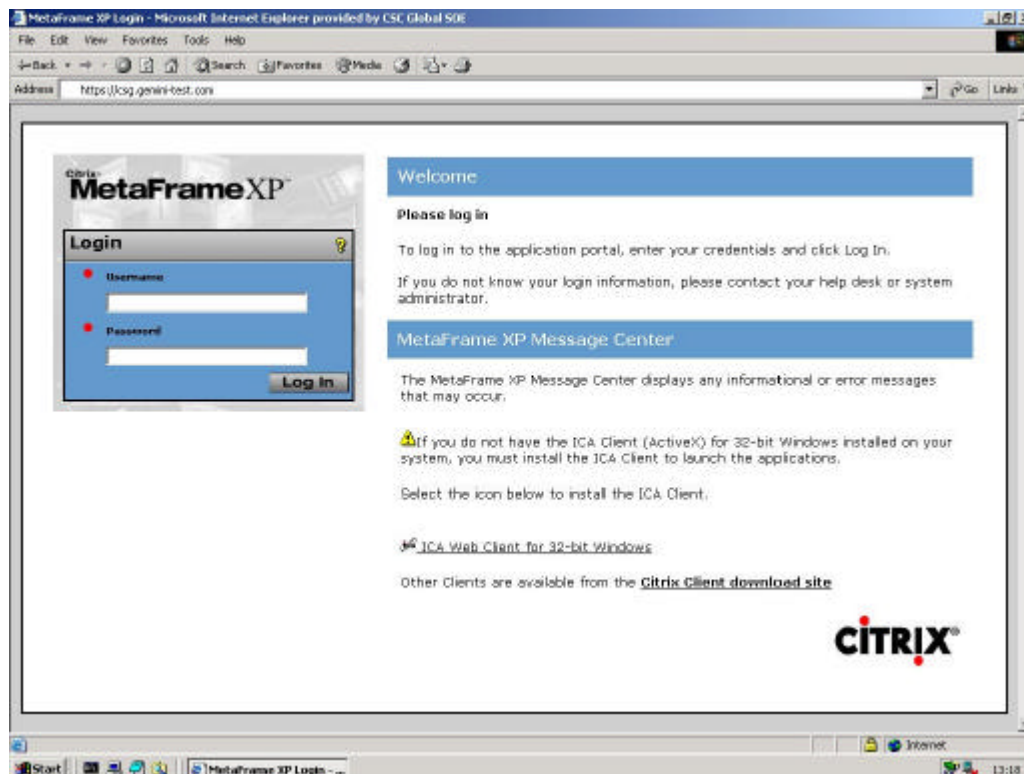
Once you believe that you have the necessary configuration in place you can test your connectivity to Gemini. To do this we would recommend the following steps.

Where these steps include screen shots these are taken from test systems. As such they do not exactly replicate what you will see when accessing the production services. They are intended to convey the more general look and feel of what you should see.

Failure to get a valid response to requests from networking tools such as ping or traceroute do **not** necessarily prove that you cannot access the Gemini services. There are measures in place to block anything other than https traffic over the specified ports.

### 2.4.1 Screen Service

1. Call up Internet Explorer on a desktop that should have access to Gemini.
2. Enter the URL <https://gemini-ix-prod-citrix.transco.co.uk> if testing access to the main production service or <https://gemini-ix-prod-citrix-dr.transco.co.uk> if testing access to the D/R service. The login page for the Citrix MetaFrame server should appear

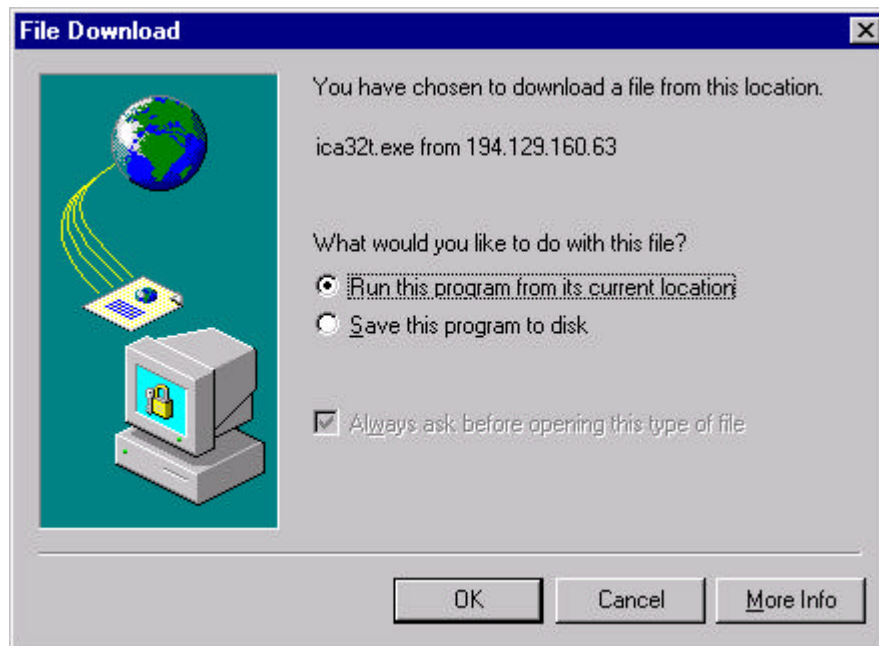


3. If you do not have a suitable Citrix web client installed then before you proceed further you should install one. See section 2.2. You can click on the "Citrix ICA Web Client for 32-bit Windows" link in the bottom right of the Citrix MetaFrame login page to download the client.

You **must** have the Citrix client installed in order to use the Gemini screen interface. This is a one-off activity on any user desktop.

If you already have a suitable Citrix client installed on the user desktop then you may proceed directly to step 6.

4. If you choose to download the Citrix client from our MetaFrame server then after clicking on the "Citrix ICA Web Client for 32-bit Windows" link, you will be prompted to download the Citrix client installation executable. See the dialog immediately below.



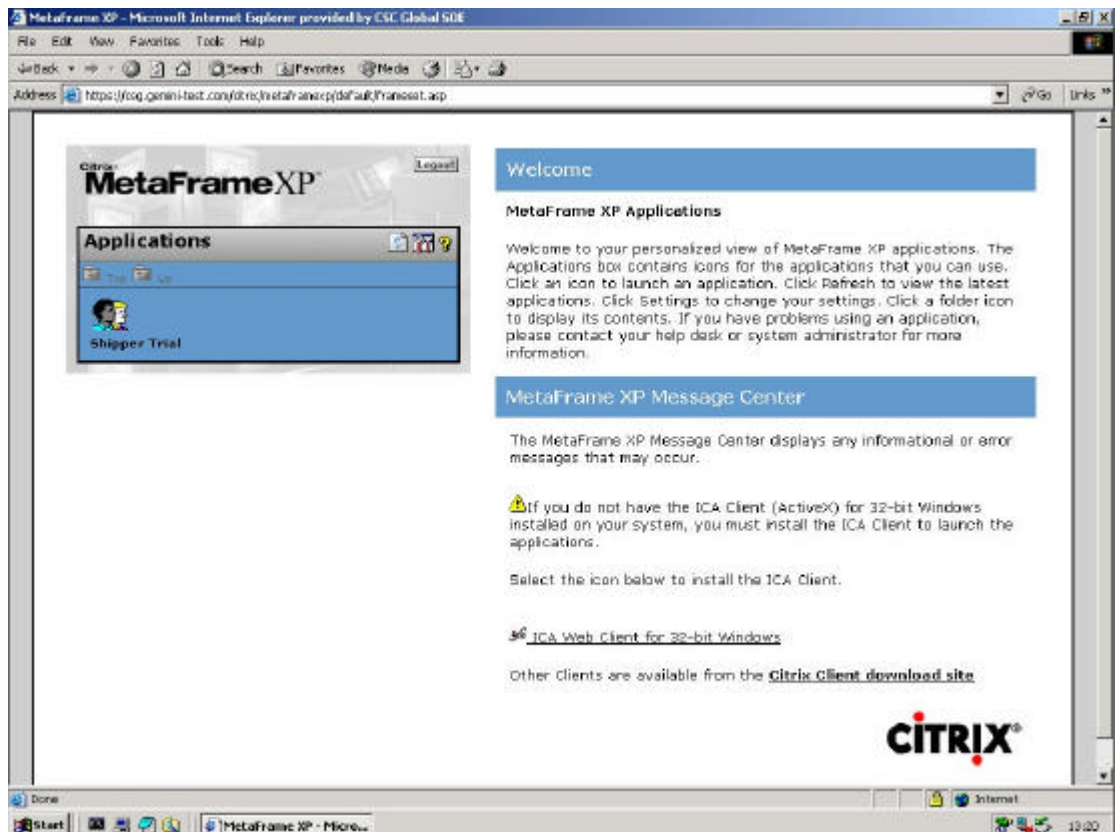
We recommend that you select "Run this program from its current location" to avoid losing track of the location of any downloaded executable and click on "OK".

5. During the installation process you will be prompted to respond to several questions.

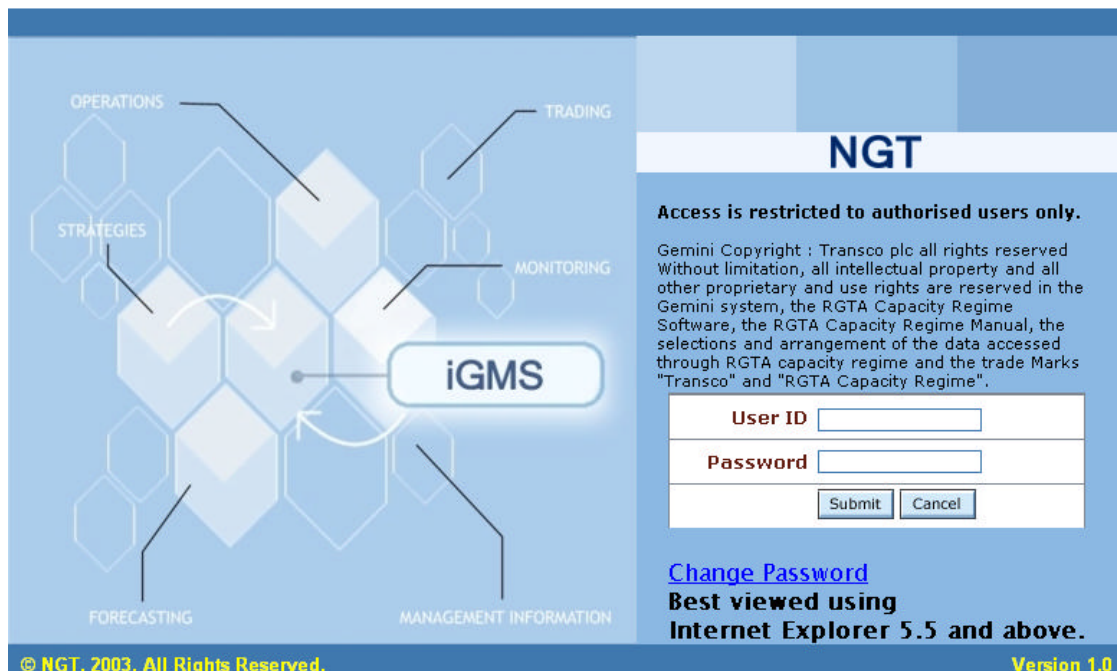
Respond "Yes" when prompted, "Do you want to install and run Citrix ICA 32-bit Windows Client...?" Respond "Yes" when prompted, "This will install Citrix ICA Web Client. Do you wish to continue?" Select "Yes" to accept the license agreement and select "OK" when installation has completed to restart your browser.

If the installation fails then the most likely explanation is that your desktop's security policies prevent the installation of software by end users. In this instance we suggest that you contact your desktop support personnel to arrange for a user that does have sufficient privileges on the desktop to perform this action.

6. In the Citrix MetaFrame login page (see step 2), enter your login "Username" and "Password". These should be obtained via the procedures in place for obtaining user accounts for access to NGT applications.
7. Click on the "Log In" button. The Application Portal for Citrix MetaFrame should appear. See the screen image immediately below.



8. Click on the “Gemini Production” icon (**NB** Not “Shipper Trial” as in the dialog above) within the Application Portal. The Gemini log in page should appear within the Citrix Client window, see the page shown immediately below. You can carry on and login to the Gemini application itself using a “User ID” and “Password” obtained from NGT. However, if you can see this login page, then you’ve successfully confirmed that the necessary configuration items are in place for access to the Gemini screen service.



**Note:** The first time that you invoke the Citrix client by clicking on the “Gemini Production” icon you will be asked what permissions to grant to your local files. Our Citrix server is

configured with the setting to “Map Client Drives” turned on. This is to allow you to seamlessly save Adobe PDF report files, for example, to your workstation.

When you display these reports within the Citrix client they’re generated within Adobe Acrobat Reader running on the Citrix server. Should you open the “File Save” dialogue from within Adobe Acrobat Reader, your own C:\ or D:\ drive is mapped and appears in the list of available drives that are visible to the application.

In order to facilitate this feature, we would recommend that when prompted you specify, “Full Access” and “Never ask me again”. If you do not do this, then you will be unable to save PDF files locally. The same principle applies when saving Comma Separated Variable (CSV) files locally.

## 2.4.2 It may be that your local security policy conflicts with enabling this access. Unless you make an exception, you will be unable to save files locally.

### API Service

1. Call up Internet Explorer on a desktop that should have access to Gemini.
2. Enter the URL: <https://gemini-ix-prod.transco.co.uk:4445/gemini/controllers/ApiLogin/>
3. The following dialogue should appear. This confirms connectivity to the API service. You should not attempt to login via the dialogue box. Instead to use APIs you should use an API client to login via a call to the login API. The URL of this and all other APIs will be notified separately.



Enter Network Password

Please type your user name and password.

Site: gemini-ix-prod.transco.co.uk

Realm: ApiLogin [13:45:42:5846]

User Name

Password

Save this password in your password list

OK Cancel

## DOCUMENT STATUS

Template Version 2.0

### PRODUCT DESCRIPTION REFERENCE

How to Configure Access to Gemini

### AMENDMENT RECORD

Issue	Draft	Date	Author	Description of changes
1	-	10/11/04	D Williamson	Changes made in accordance with NGT review comments
1	1	08/10/04	D Williamson	Initial Version

### CHANGE FORECAST

This document may be reissued if occasion demands it, for example if new styles are developed. If so, it will be issued whole, not just the changed pages.

### DISTRIBUTION

This document is stored in the Information Systems, System Operator Development electronic library.

Copies	Destination

### Retention Table

Type of Document	Responsibility	Retention Period

— End of Document —