

Gemini Project

Gemini Architecture

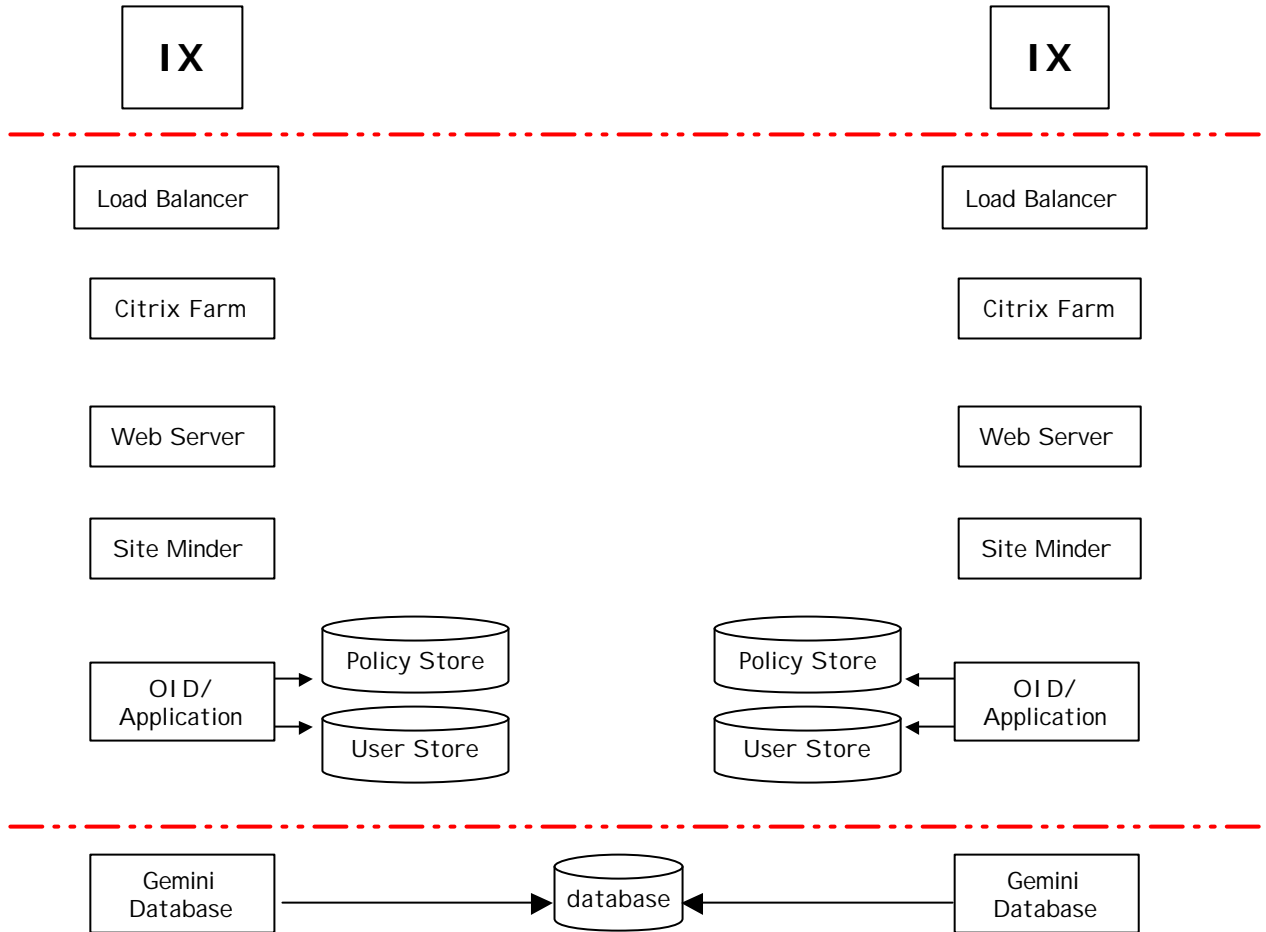
2 March 2004

Nick Barney

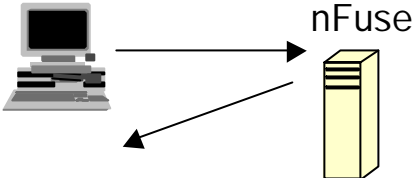
Contents

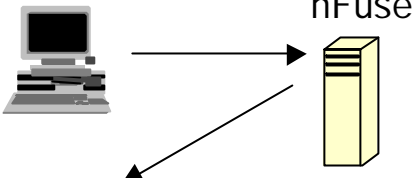
- Gemini Shipper Facing Environment
- Gemini Shipper Log-on Process
- High Level Network Architecture

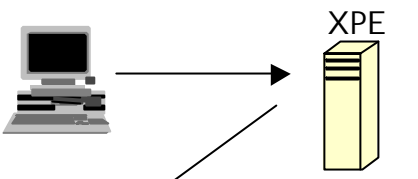
Gemini Shipper Facing Environment

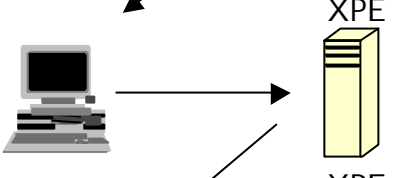



Gemini Shipper Logon Process

- 

1. Logon to Citrix nFuse server
- 

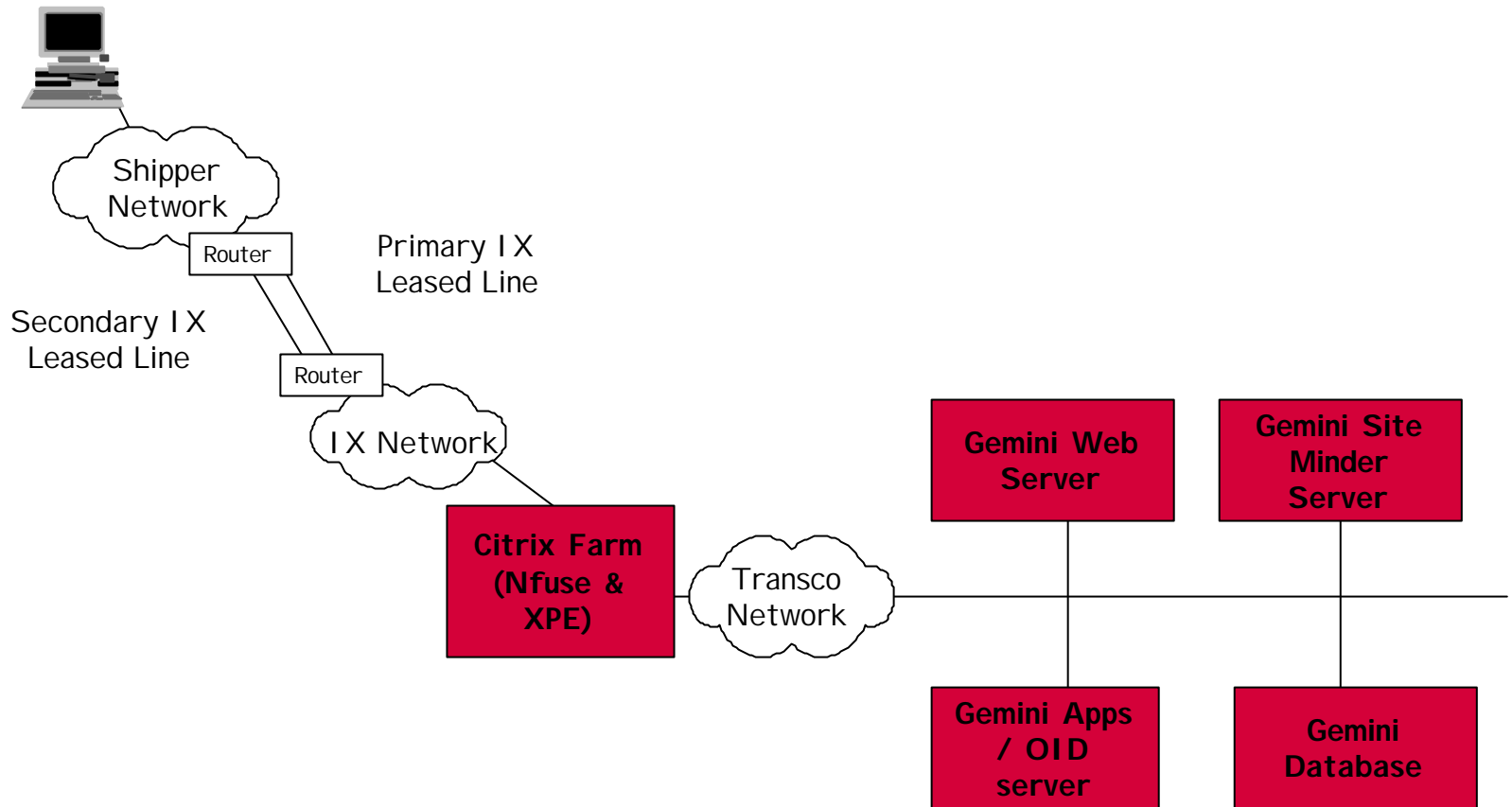
2. (First time only) – request download of Citrix client to PC
- 

3. Citrix client directs user to Citrix XPE server
- 

4. Double click Gemini desktop icon
- 

5. Logon to Gemini

High-level Network Architecture





Thank You