

Gemini Shipper Working Group

20 October 2004

Agenda

- Introductions All
- Apologies for Absence Mark Nicolson
- Actions from Previous Meetings Mark Nicolson
- API Analysis and Design Update Vishal Soni
- Citrix Screen Data Access Demo
 - Rational Robot Rohit Wazir
 - Quick Test Pro Gareth Lynn
- Training Requirements & Process Angela Whitlock
- EB and Exit Functionality Tim Bradley/Anne Young
- Suggest Schedule of Key Events Mark Nicolson
- Next Steps Mark Nicolson

Gemini Shipper Working Group Meeting
API Analysis & Design Update
20 Oct 2004

Agenda

- Analysis & Design Process
- Shipper A&D Clarifications Questionnaire – Results
- Updates on Alternative Options
- Outstanding Queries
- Process & Next Steps

Analysis & Design Process

- Objective: Development of API Specifications and Gemini API Design
- Shipper Working Group engagement for further clarifications & expected usage patterns
- API Specifications being built in phases, using Requirements presented at Shipper Forum:
 - Batch 1 – 2 API's
 - Batch 2 – 6 API's
 - Batch 3 – 8 API's
- Phased approach will facilitate early SWG review before release of Draft API Specifications to wider community

Shipper A&D Clarifications Questionnaire – Results

- Responses received from 2 of 8 SWG members
- Based on limited responses and analysis progress, can confirm the following...

Shipper A&D Clarifications Questionnaire - Results

Entry Capacity API's

No	Entry Capacity API	Consultation Result	A&D Update	Remarks
1	Bid Information Shipper View - Demand Driven Pricing Strategy	Required	?	Original requirement from 1 Shipper, but now undecided.
2	Bid Information Shipper View - Options Pricing Strategy	Required	?	Original requirement from 1 Shipper, but now undecided.
3	Daily Auctions Summary Report - WAP	Required	API	
4	Daily Auctions Summary Report - Sold / Unsold	Required	API	
5	Daily Auctions Summary Report - Max / Min Price Info	Required	API	
6	Daily Auctions Summary Report - Bids / Shippers	Required	API	
7	Revised Entitlements (Enhancement to Existing API)	Required	API	
8	Bulk Bid Upload	Potential	BU	Cannot confirm detailed requirements. Recommend existing Bulk Upload at this stage.

Shipper A&D Clarifications Questionnaire - Results

Energy Balancing API's

No	Energy Balancing & Exit Capacity API	Consultation Result	A&D Update	Remarks
1	MM10 - Meter List NL90 - Meter Id Lookup	Required	Gemini Message	Gemini Message is sufficient.
2	MM12 - Maintain Meter Details (View)	Required	API	
3	OC01 - Maintain OCM Renominations (View) OC06 - Maintain NBP Physical Renominations (View)	Required	API	
4	OC06 - Maintain NBP Physical Renominations (Update / Commit NBP Physical Trades)	Required	API	
5	OC07 - Maintain NBP (Multi Locational) (Update/Commit NBP Physical Trades)	Required	API	
6	AN20 - Output Nomination Detail AN21 - Output Nomination Detail AN22 - Input Nomination Detail	Potential	BD	Existing Bulk Download is sufficient.
7	AB14 - Shippers' Energy Imbalance Detail	Potential	View Data	View Data CSV download will suffice as data not over multiple screens.

Shipper A&D Clarifications Questionnaire - Results

Other API's

No	Entry Capacity API	Consultation Result	A&D Update	Remarks
1	Gemini Password Change API	Potential	?	API feasibility and NGT Security Policy implications under analysis.

Shipper A&D Clarifications Questionnaire – Summary

- Entry Capacity
 - 5 of original 7 Required API's are firm requirements
 - Remaining 2 API's for Bid Information may not be required
 - The Potential API for Bulk Bid Upload is not required
- Energy Balancing
 - 4 of original 5 Required API's are firm requirements
 - 1 remaining API for MM10/NL90 is not required
 - The 2 Potential API's are not required
- Other
 - Feasibility of Gemini Password Change Potential API is under evaluation

Updates on Alternative Options

- Investigate automatic invocation of CSV Reports
 - Screen Data Access through testing tool is the only feasible alternative to achieving this.
 - Conclusion: Solution not viable.
- Investigate options for returning Bid Id through Bulk Bid Uploads
 - Shippers have not confirmed requirements for enhancements to the Bulk Bid Upload process at present.
 - Returning Bid Id's with the Bulk Upload would require a significant design change because Input and Output records do not map 1-to-1.
 - Conclusion: Recommend existing Bulk Upload process remains unchanged.

Updates on Alternative Options

- Gemini API for Password Change
 - Implications on NGT Security Policy under evaluation.
 - Conclusion: Still under consideration; update at next Shipper Forum.
- Gemini Meter Activation / Deactivation system message
 - Conclusion: MM10/NL90 API is not required if Gemini notifies Shippers of a Meter Activation / Deactivation through a system message.
 - Will require Shippers to incorporate checks for this message as part of regular Operations processes.

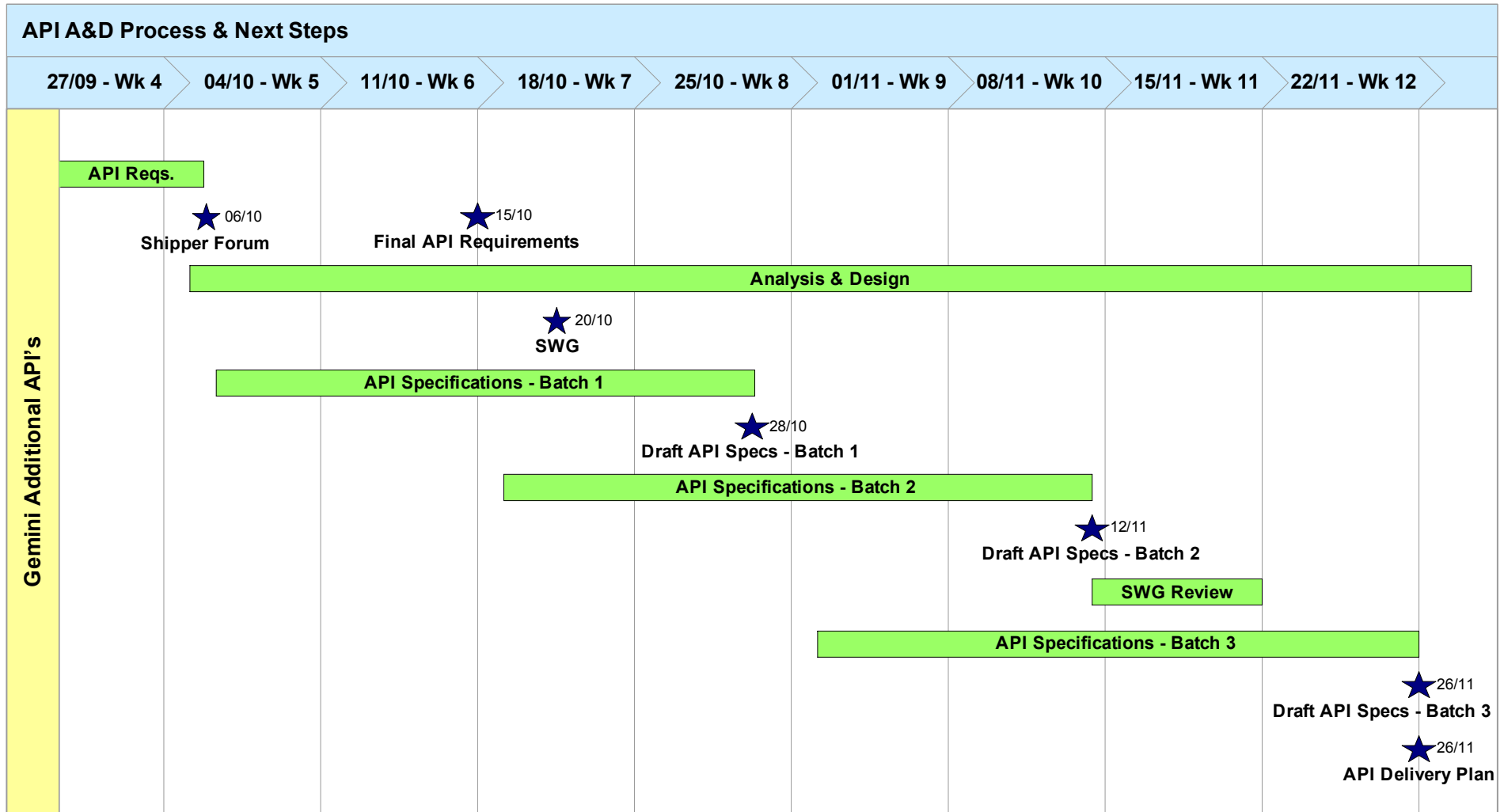
Updates on Alternative Options

- Bulk Uploads / Downloads vs. API's
 - Conclusion: AN20/21/22 API is not required because the existing Bulk Download is sufficient.
- View Data Facility
 - Conclusion: Will be provided for all Shipper screens.
 - Replaces the need for AB14 API as this screen contains summary information that would be presented on a single screen.

Outstanding Queries

- Confirm Multiple BA Selection
 - Not available for API's
- Offline Upload of Nominations
 - Basis for current design is requirement for D-1 Nominations to be in the system by 1pm in accordance with Network Code.
 - Existing Nominations Upload process facilitates this by requiring Shippers to commit Nominations online to ensure they are accepted by Gemini.
 - An offline (asynchronous) facility cannot provide this guarantee.
 - Recommendation: Retain existing implementation

Process & Next Steps



API Specifications – Current API Grouping

- **API Batch 1**
 - **EB - OC01/OC06 Maintain OCM / NBP Physical Renominations (View)**

 - **EC - Bid Information (Options Pricing Strategy)**
- **API Batch 2**
 - **EC - Daily Auctions Summary Report (WAP)**
 - **EC - Daily Auctions Summary Report (Sold / Unsold)**
 - **EC - Daily Auctions Summary Report (Max / Min Price Info)**
 - **EC - Daily Auctions Summary Report (Bids / Shippers)**
 - **EB - OC06 Maintain NBP Physical Renominations (Update)**
 - **EB - MM12 Maintain Meter Details (View)**
- **API Batch 3**
 - **EC - Entitlements (Enhancement to existing API)**
 - **EB - OC07 Maintain NBP Multi Locational Trades (Update)**
 - **Other - Gemini Password Change API**

 - **EC - Bid Information (Demand Driven Pricing Strategy)**
 - **EC - Bulk Bid Upload**
 - **EB - MM10/NL90 Meter List**
 - **EB - AN20/21/22 Nomination Details**
 - **EB - AB14 Shippers Energy Imbalance Detail**

Shippers Sub-Group Meeting
Screen Data Access – Demonstration
20 October 2004

Screen Data Access Demonstration – Overview

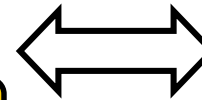
- Following the completion of the Gemini Screen Data Access Citrix Proof of Concept we are able to demonstrate ‘screen scraping’ using:
 - Rational Robot
 - Mercury Interactive Quick Test Pro (QTPPro)

Screen Data Access - Shipper Set Up

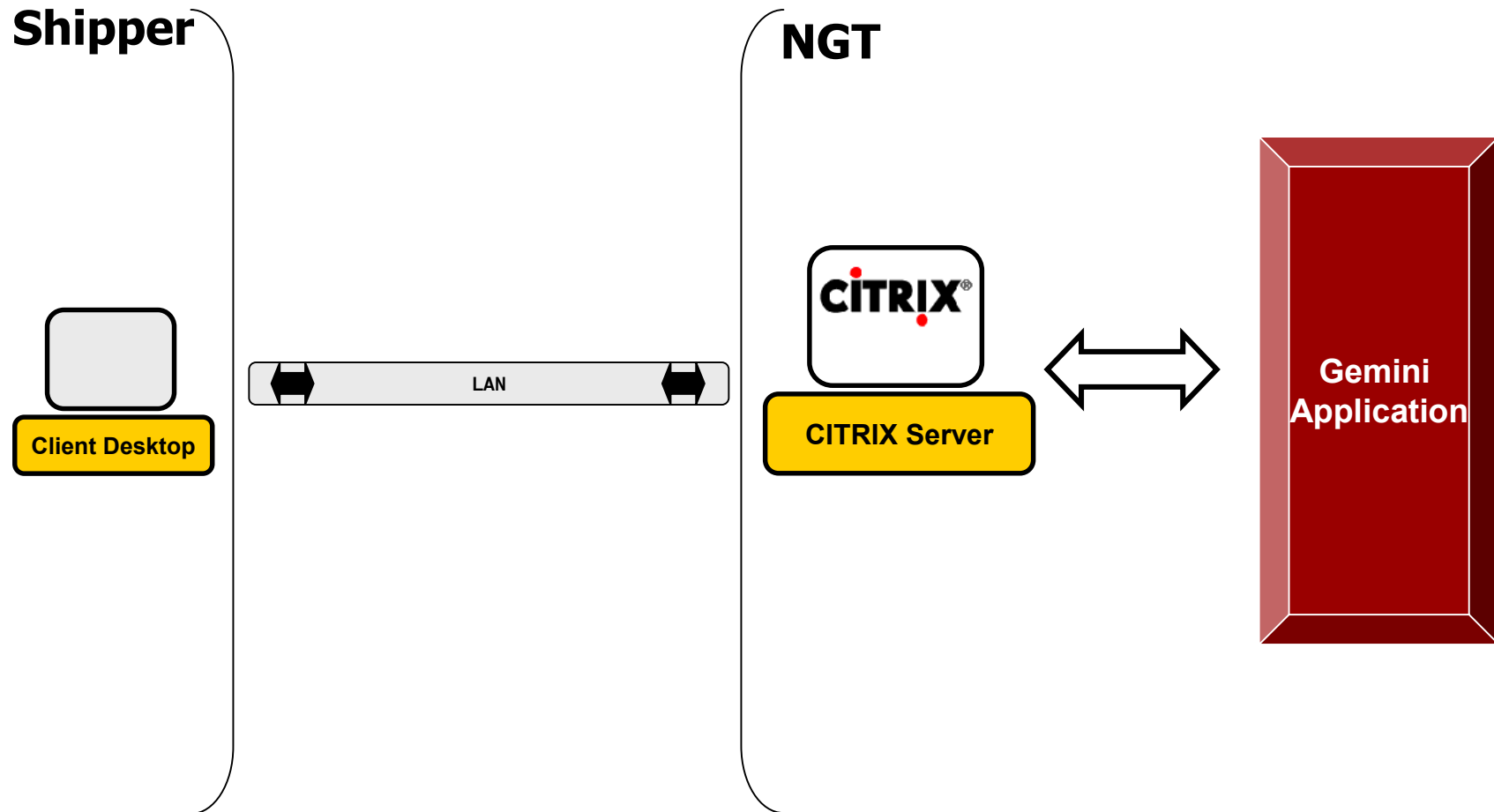
Shipper



NGT



Screen Data Access - Demonstration Set-up



Screen Data Access Demonstration – Overview

- Both solutions allow scripts to be built to perform various functions, such as:
 - Log into Gemini over Citrix
 - Log out of Gemini
 - Navigate to a screen
 - Input data to that screen
 - See the returned results
 - Access data from the screen and react accordingly

Rational Robot Demonstration

- Data Input and Extraction Process
 - Scenario recorded using Rational Robot -> Robot generates a SQA Basic script
 - Rational Robot recognizes the screen elements by their screen co-ordinates
 - SQA Basic scripts can be customised, e.g. to read data from a file or to provide a file name
 - Playback the recorded scenario

- Gemini View Data facility is used to 'capture' data

QTPro Demonstration

- Data Input and Extraction Process
 - QTPro scripts are recorded utilising the Gemini screens
 - Extra script can be coded to perform functions based on screen data (e.g. loop a number of times based on number of pages)
 - QTPro recognizes screen data based on element names
 - The resultant script can be called as an executable and have parameters passed to it
- QTPro can strip data from a screen and write to a file/pass to another application
- Functionality can be used with Gemini View Data facility to 'capture' data

QTPro Demonstration

RUN / STOP / Record buttons

QTP code runs to screen scrape data from Gemini Screen

Shows retrieved data on a spreadsheet which is built into the QTP application, used for monitoring and manipulating data type and output formats which can be used by script writers to change the way the data is finally displayed.

The screenshot displays the QuickTest Professional interface. The top window shows a VBS script for 'Action1' with the following code:

```
1 Const ForReading=1, ForWriting=2, ForAppending=8
2 Dim fso,f,i,p
3
4
5 ' Navigation section, this can be modified dependant on where the shippers want to execute from
6 Browser("Browser").Page("Page").WebElement("Define Activity").Click
7 Browser("Browser").Page("Page").Frame("appIFrameName").WebList("SelBAShortCode").Select DataTable("ba", dtGlobalSheet)
8 Browser("Browser").Page("Page").Frame("appIFrameName").WebList("SelRateSchedule").Select "Exit"
9 Browser("Browser").Page("Page").Frame("appIFrameName").WebButton("Query").Click
10
11 ' create a filesystem object then open the shippers file
12 Set fso = CreateObject("Scripting.FileSystemObject")
13 Set f = fso.OpenTextFile("c:\shippers.csv",ForWriting,True)
14
15 ' Write the header to the file
16 f.WriteLine ("Activity Number,Input meter,Zone,LDZ,Output Meter,Zone,ldz,Opp flow,Gas Trade")
```

The bottom window shows a data table with the following structure:

A1	BUS	B	C	D	E	F	G	H	I	J	K	L	M	N
1	BUS													
2														
3														
4														
5														
6														
7														
8														
9														
10														
11														
12														

**Gemini Shipper Working Meeting
Training Overview
20 October 2004**

Agenda

- Lessons Learnt
- Deliverables
- Resources
- Timescales

Lessons Learnt

- **Entry Capacity Release**

1. Insufficient Data in the Environment
2. Training Environment 4 weeks before delivery
3. Started training on a Monday and had weekend server problems
4. IP addresses were found to be a problem when accessing the internet
5. Delivered Training during Testing
6. Problems with some User ID's - User ID's were set up but were not live in the system.

- **Energy Balancing & Exit Capacity Release**

1. We have been specific on data requirements for the Training Environment and the Trainers will be involved in populating the Database.
2. Training Environment 4 months before delivery of Training
3. Training Tuesday to Thursday where possible
4. Check List being produced for system access
5. Testing Completed prior to Training Delivery. Training Team will also be assisting with Testing.
6. We are testing User ID's on all training accounts

Deliverables – Courses

- Energy Balancing & Exit Capacity Course
 - Shipper/BA's/Traders and Nominating Agent (1.5 to 2 Days)
 - Introduction
 - Nominations
 - OCM
 - Exit Capacity
 - Allocation Agents (0.5 Days)
 - Introduction
 - Allocations: Relevant screens for each Allocation Agent
 - Market Operators (0.5 Days)
 - Introduction
 - OCM

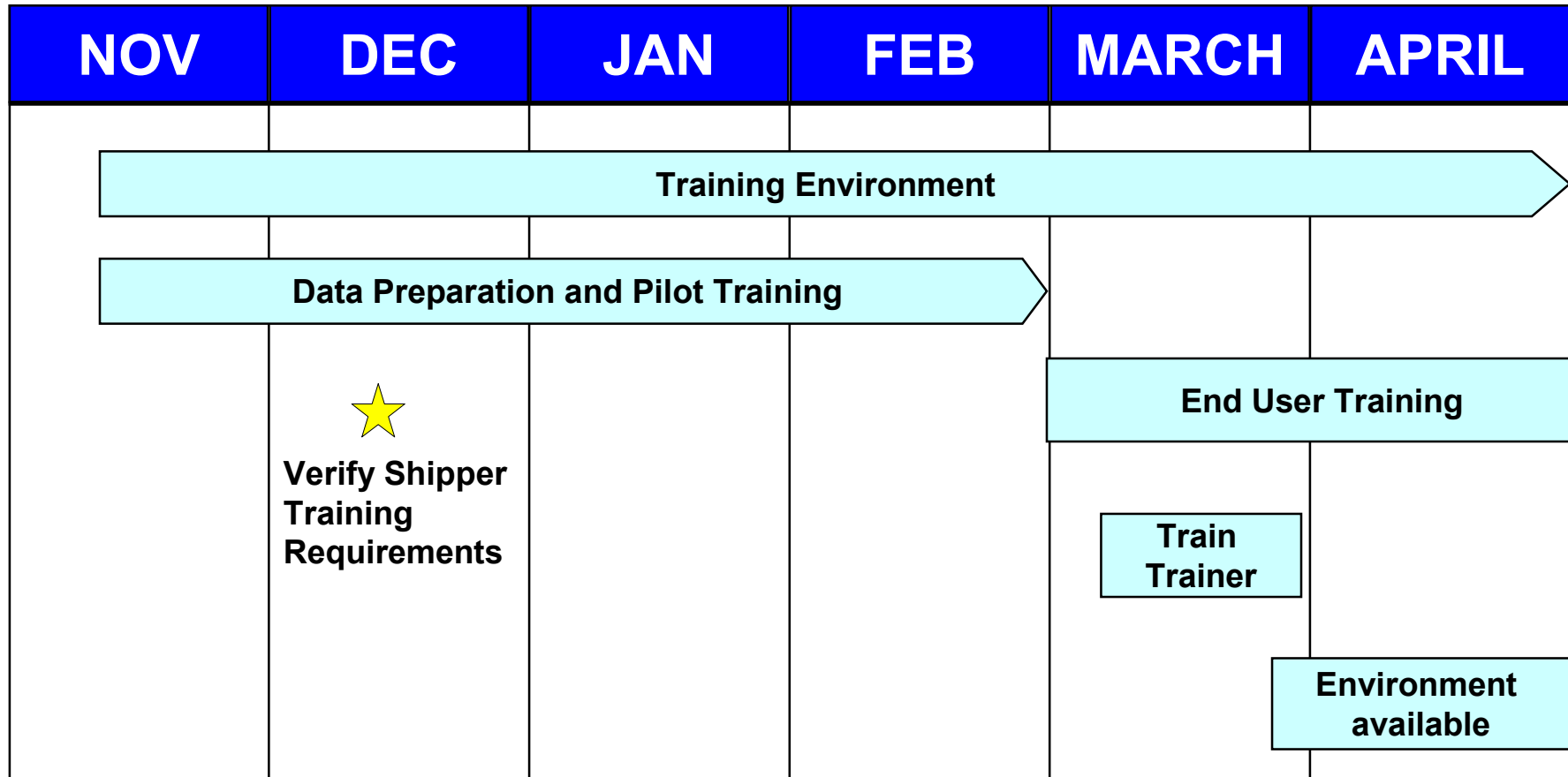
Deliverables – Proposed Locations

- End User Training Courses
 - London
 - Midlands
 - Scotland, Ireland & Europe
 - Own Premises With a Minimum 10 Delegates
 - Acceptable Training Facilities and Infrastructure
- Train the Trainer Courses
 - London
 - Midlands

Training Team Resources

- Training & Communications Manager
 - Training Coordinator
 - 2 Full Time Trainers
 - Procedures Coordinator
 - Training Administrator

Training Timeline



Any Questions ?



National Grid Transco

Gemini Shipper Working Group Meeting
Functionality Review
20 Oct 2004

See attached word presentation

Gemini Shipper Working Group Meeting
Future Events
20 Oct 2004

Suggested Schedule of Key Events

Suggested Key Event

1. Overview of EB and Exit Functionality
2. Training Requirements and Process
3. Acceptance Process & Performance
4. Phased Cutover & Implementation Plan
5. Shipper Trials
6. API Development

Proposed Audience

- SWG (today) & Shipper Forum - November
- SWG (today) & Shipper Forum - November
- November SWG & Shipper Forum - December
- November SWG & Shipper Forum - December
- December SWG & Shipper Forum - January
- Shipper IS Functions - December

Gemini Shipper Working Group Meeting

Next Steps

20 Oct 2004

Next Steps

