



# **Domestic Shipper Constituency**

30/06/2020

# Agenda

Business Plan 21

Seasonal Normal Review 2020

Data Discovery Platform

Change Update

AOB

# Slido

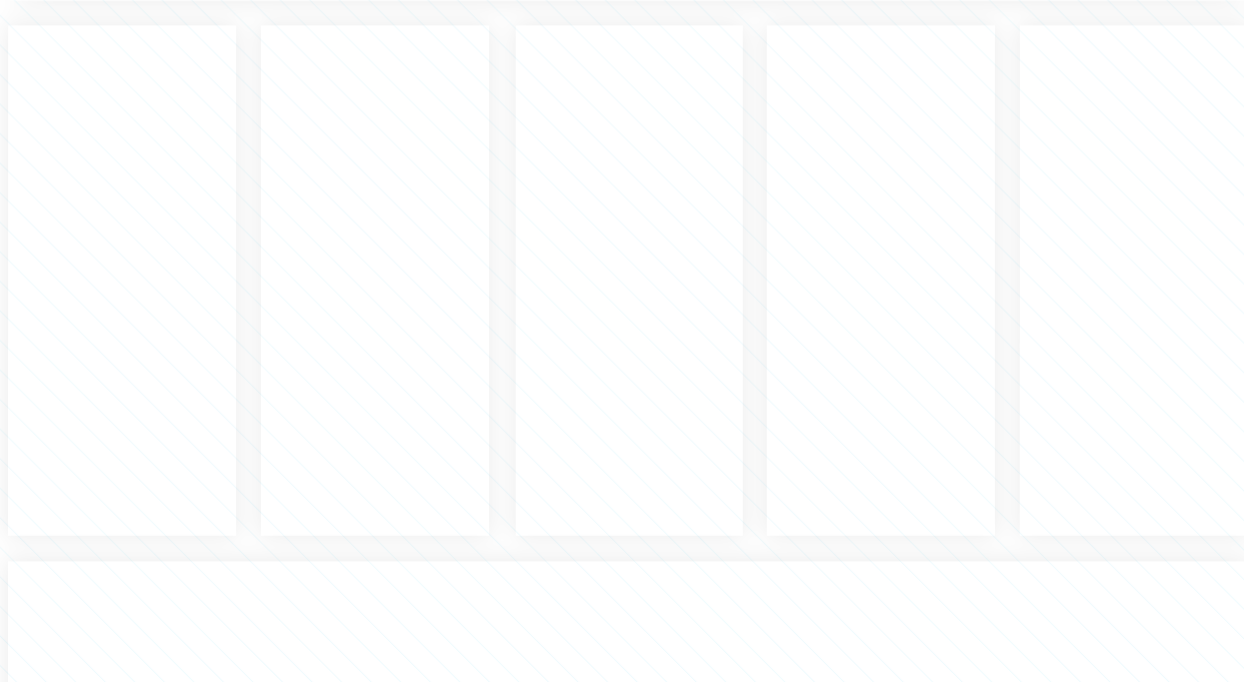
To ensure we capture the views and comments from everyone, we will be using the tool 'Slido' we will be asking the below 3 questions at the end of the meeting;

- How useful did you find the meeting? (1 - not useful at all) (5 - extremely useful)
- Would you attend another meeting in the future, and how often do you think we should host the meeting?
- What would you like to see in a Shipper Constituency in the future?

You can join via a web page, google 'Slido' and enter **Event Number #68044**

Alternatively, you can download Slido to your mobile phone via your App Store. Enter **Event Number #68044**

# Business Plan 21






# Seasonal Normal Review 2020

Update

# Seasonal Normal Review 2020 – Exec Summary

- From 1<sup>st</sup> October 2020 a new Seasonal Normal basis will take effect, so what does this mean?
  - The Composite Weather Variable (CWV) formula will change (to include Solar Radiation)
  - The Seasonal Normal Composite Weather Variable (SNCWV) values will change
  - Class 3 and 4 NDM Nominations and Allocations will be using CWVs based on the new formula and the revised SNCWV values
  - ALL Rolling AQs / SOQs for Class 3 and 4 Supply Meter Points will reflect the new view of Seasonal Normal weather, either by...
    - Calculating an AQ using reads submitted during September 2020 which will refer to revised Weather Adjusted Annual Load Profiles (WAALPs) or
    - Applying a Seasonal Normal Ratio to existing AQ where an AQ was not calculated during September 2020
  - Note: Billing AQs / SOQs will remain unchanged and will only reflect the new Seasonal Normal basis from April 2021 (based on December 2020 snapshot)

# Background – CWV and SNCWV

- Why do these values matter and why review them ?
- The CWV and SNCWV are the key building blocks used in producing EUC Demand Models and Gas Demand Profiles, namely: Annual Load Profiles (ALPs), Daily Adjustment Factors (DAFs) and Peak Load Factors (PLFs) which are subsequently used in....
  - the calculation of daily Class 3 and 4 NDM Nominations and Allocation
  - the calculation of a Class 3 and 4 Supply Meter Point's Annual Quantity (AQ)
  - the calculation of a Class 3 and 4 Supply Meter Point's Peak Offtake Quantity (SOQ)
  - any processes which perform Class 3 and 4 NDM Read Estimation
- It is therefore important that the CWV and SNCWV are reviewed to ensure they remain reflective of the latest consumption behaviours/levels and the latest weather experienced

# Background – Who reviews them ?

- Section H of UNC contains all of the activities which relate to Demand Estimation and Forecasting processes
- Demand Estimation Sub Committee (DESC) alongside the Demand Estimation team at Xoserve carry out the functions referred to in this Section
- Included in these functions is the requirement to:
  - 1) review the Composite Weather Variable (CWV) (H 1.4.3) and
  - 2) review the Seasonal Normal equivalent referred to as the SNCWV (H 1.5.3)
- The last review of the CWV formula and Seasonal Normal basis was completed by DESC in 2014. The revised values took effect from 1st October 2015 and remain in place today
- For stability across the many industry processes impacted, DESC review the CWV and SNCWV, as a minimum, every 5 years. The current basis 'expires' on 30th September 2020



# Seasonal Normal Review – Timeline (part 1)

## High Level Timeline of CWV / SNCWV Review and Implementation

2019												2020															
JAN	FEB	MAR	APR	MAY	JUN	JUL	AUG	SEP	OCT	NOV	DEC	JAN	FEB	MAR	APR	MAY	JUN	JUL	AUG	SEP	OCT	NOV	DEC				
Complete review of CWV Formula and Seasonal Normal Basis, Define methodology and calculate values for next period (2020-2025)																											
ANALYSIS / REVIEW / DECISION MAKING PHASE										New CWVs and SNCWVs approved by DESC																	
Develop Gas Demand Profiles for GY 2019/20 using <u>CURRENT</u> CWVs and SNCWVs								Gas Demand Profiles in place for Gas Year 2019/20, using <u>CURRENT</u> CWVs and SNCWVs																			
												Preparation for Modelling for GY 2020/21															
																Develop Gas Demand Profiles for GY 2020/21 using new CWVs and SNCWVs											
																		Preparation for AQ Calculations for Oct 2020									
																								New CWVs and SNCWVs and Gas Demand Profiles <u>GO LIVE</u> for GY 2020/21			
SYSTEM CHANGE (June 2020 Release) - Changes to accommodate New CWV Formula in readiness for 1st October 2020																											

KEY

Prep. for New CWVs and SNCWVs - Work in Progress / To be done

CURRENT CWVs and SNCWVs

Prep. for New CWVs and SNCWVs - Completed

# DESC's Review of CWV and SNCWV during 2019

- The criteria used for assessing the revised CWV formula was about improving the relationship to NDM demand which in turn should improve the accuracy of demand modelling (which is DESC's remit). In turn, this will help to drive more accurate allocation which, all things being equal, will mean reduced reconciliation levels
- The criteria for the revised SNCWV was about ensuring that the values derived reflect a sensible 'benchmark' for Seasonal Normal weather (hence use of Met Office provided Climate Change modelled output)
- Following a number of planned milestones during 2019 DESC have now concluded their review, as a result we now have:
  - A revised CWV formula (including a new 'Solar Term\*') and
  - A new set of SNCWV values (including an updated view of Climate Change adjusted temperatures)

*\* A measure of sunlight which was proven to be an additional influence on gas demand (alongside temperature and wind speed)*

# Further Information on the Analysis / Review Phase

- For audience who just need the principles / high level understanding:
  - News Article on 'CWV Formula Review and Decision' [here](#) (October 2019)
  - News Article on 'SNCWV Formula and Decision' [here](#) (December 2019)
  - News Article on 'How the Seasonal Normal Review may impact you' [here](#) (May 2020)
- For audience who require more of the detail:
  - Revised CWV Formula and optimised parameters presented at DESC can be found [here](#)
  - Review of the existing SNCWV presented at DESC can be found [here](#)
  - Revised SNCWV values and supporting analysis presented at DESC can be found here
    - [Part 1](#) and [Part 2](#)

# Data available as at March 2020

- The following documents have been published on the secure area of Xoserve's website – 'UKLink Docs' under the following folder:

## 18.NDM Profiling and Capacity Estimation Algorithms > 2020-21 Gas Year > 5. Seasonal Normal 2020

- Revised Pseudo Seasonal Normal Effective Temperature (Pseudo-SNET) for GY 2020/21 ([SN20\\_SNET20.txt](#))
- Revised Pseudo Seasonal Normal Effective Solar (Pseudo-SNES) for GY 2020/21 ([SN20\\_SNES20.txt](#))
- Revised Seasonal Normal Compositive Weather Variable (SNCWV) for GY 2020/21 ([SN20\\_SNCWV20.txt](#))
- Recalculated CWV History spanning Gas Years 1960/61 to 2018/19 inclusive ([SN20\\_CWV6019.txt](#))
- Summary Document of Analysis completed by DESC during 2019 ([Seasonal Normal Review 2020.pdf](#))

# Why do AQs and SOQs need to change ?

- An AQ represents the 'normal' annual consumption for a Supply Meter Point which has been based on a pair of meter readings. There are 2 components to the AQ calculation:
  - Part 1 is to calculate the ACTUAL consumption between Read x and Read y
  - Part 2 is to 'weather correct' the ACTUAL consumption in order to represent an annual NORMAL consumption
- The 'weather correction' element is referred to as the Weather Adjusted Annual Load Profile (WAALP). This utilises the ALP, DAF, SNCWV and CWV, all of which will be impacted by the outcomes from the Seasonal Normal Review
- Where it has not been possible to calculate an AQ in time for 1<sup>st</sup> October 2020 a Seasonal Normal ratio is required to adjust the current AQ to ensure all on the same basis
- SOQs, which represent the expected peak day consumption of a Supply Meter Point, are a function of the AQ and the Peak Load Factor (PLF) and so naturally will also change. The PLF can change every year depending on the Demand Model characteristics but this year will also include changes as a result of the Seasonal Normal Review

# Seasonal Normal Review – Timeline (part 2)

## High Level Timeline of CWV / SNCWV Review and Implementation

2019												2020														
JAN	FEB	MAR	APR	MAY	JUN	JUL	AUG	SEP	OCT	NOV	DEC	JAN	FEB	MAR	APR	MAY	JUN	JUL	AUG	SEP	OCT	NOV	DEC			
Complete review of CWV Formula and Seasonal Normal Basis, Define methodology and calculate values for next period (2020-2025)																										
										New CWVs and SNCWVs approved by DESC																
			Develop Gas Demand Profiles for GY 2019/20 using <u>CURRENT</u> CWVs and SNCWVs						Gas Demand Profiles in place for Gas Year 2019/20, using <u>CURRENT</u> CWVs and SNCWVs																	
												Preparation for Modelling for GY 2020/21														
															Develop Gas Demand Profiles for GY 2020/21 using new CWVs and SNCWVs											
																		Preparation for AQ Calculations for Oct 2020								
																					New CWVs and SNCWVs and Gas Demand Profiles <u>GO LIVE</u> for GY 2020/21					
SYSTEM CHANGE (June 2020 Release) - Changes to accommodate New CWV Formula in readiness for 1st October 2020																										

CDSP IMPLEMENTATION PHASE

KEY

Prep. for New CWVs and SNCWVs - Work in Progress / To be done

CURRENT CWVs and SNCWVs

Prep. for New CWVs and SNCWVs - Completed

# Seasonal Normal Review 2020 – Implementation

- Following the completion of DESC's analysis, review and decision making phase it is now necessary to 'implement' these new values
- Although all values become effective from gas day 1<sup>st</sup> October 2020 there are processes such as Demand Estimation and AQ calculation that require work ahead of this date
- It is appreciated that the industry will want to understand the likely impacts to AQ and SOQ levels as a result of these changes asap, as a result during Q1 of 2020 the existing EUC Demand Models (i.e. derived in 2019) were re-stated using the new weather values (CWVs / SNCWVs) in order to provide an INDICATIVE view

Results were shared with DESC [here](#). The ACTUAL results will be known later in the year

- The next few slides focus in on the work to be done and information that will be provided ahead of 1<sup>st</sup> October 2020

# Seasonal Normal Review 2020 – Implementation – Q2

- Q2 2020 – April to June
  - The BAU activity of EUC Demand Modelling will take place during this quarter BUT using the new CWV and SNCWV values
  - Draft Gas Demand Profiles (ALPs, DAFs and PLFs) for Gas Year 2020/21 to be published in early June for review by DESC (secure area on UK Link Docs)
  - CWVs calculated off-line using new formula for Gas Year 2019/20 will be published in April, May and June (secure area on UK Link Docs)
  - Major June release will include system changes to accommodate changes in CWV formula i.e. inclusion of Solar Radiation – note changes will effectively lie dormant until 1<sup>st</sup> October 2020



# Seasonal Normal Review 2020 – Implementation – Q3

- Q3 of 2020 - July to September
    - CWVs calculated off-line using new formula for Gas Year 2019/20 will be published in July, August and September (secure area on UK Link Docs)
    - To support AQ calculations in September 2020:
      - For all EUCs, revised historical ALPs and DAFs\* based on 2020 EUC Demand Models to be calculated and published around early August
      - Seasonal Normal Ratios\* to be calculated and reviewed by DESC in early July and likely published early August
      - Weather Correction Factors (WCFs) to be published for historical years early August
- \* Timings depend on successful completion of Industry consultation on this years EUC Demand Modelling processes which is normally mid to late July*
- Note: The Seasonal Normal Ratio for each EUC will be applied to those Supply Meter Points which fail to calculate in the September 2020 AQ calculation run. This ensures all Live Supply Meter Points effective from 1<sup>st</sup> October 2020 will be on the same Seasonal Normal weather basis

# Further Communication for remainder of the year

- Attendance at various Industry Forums to promote awareness and explain impacts
- High Level Overview:
  - At least one more 'News Article' to follow this year
- Detailed Material discussed at DESC:
  - Further updates will be provided at every DESC meeting this year (April, May, July) and there will a Key Messages issued by Joint Office after each meeting
- Data Publication on UK Link Docs:
  - A number of additional files will be provided in the folder 18.NDM Profiling and Capacity Estimation Algorithms > 2020-21 Gas Year > 5. Seasonal Normal 2020
- Any questions on the Seasonal Normal Review 2020 process can be directed to the Demand Estimation team at Xoserve

Email: [Xoserve.demand.estimate@xoserve.com](mailto:Xoserve.demand.estimate@xoserve.com)

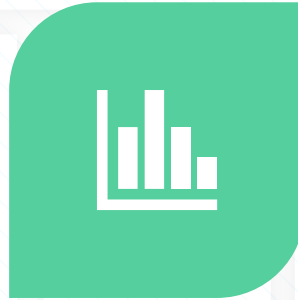


DATA DISCOVERY PLATFORM  
SHIPPER DISCUSSION  
JUNE 2020

# AGENDA



OVERVIEW OF  
APPROACH / WORK  
DONE TO DATE

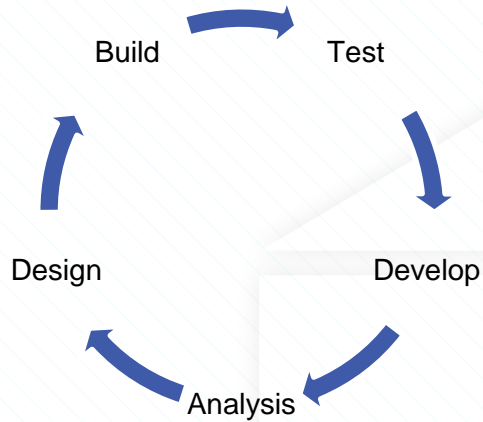


VALIDATE  
DIRECTION OF  
TRAVEL



BACKLOG  
DISCUSSION

# Data Discovery Platform – Update



## Work To Date:

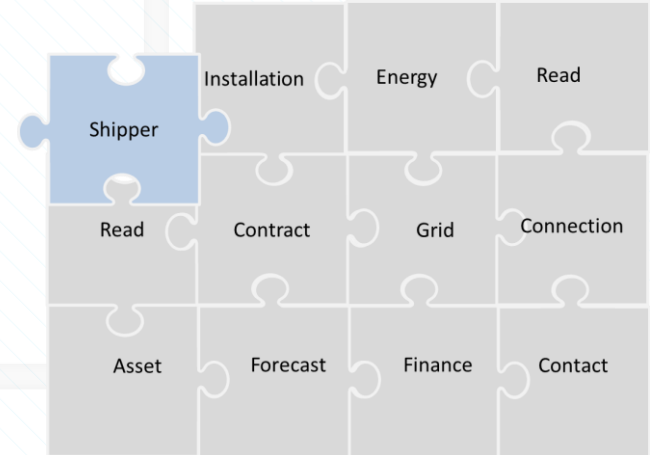
- Delivered; Portfolio, Reads x 2, Asset,
- Planned AQ drop (commencing in July)

## Approach:

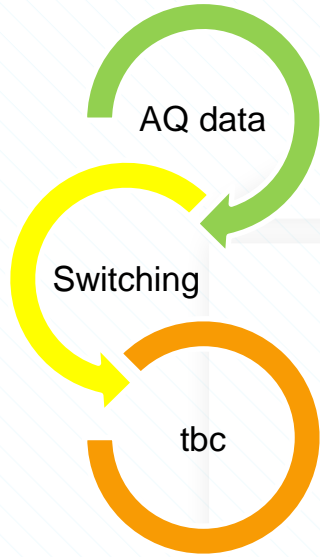
- Iterative agile delivery
- Methodologies and best practices gained from previous drops will be used.
- A product backlog has been established – this meeting is an opportunity to add user stories

## What are we delivering:

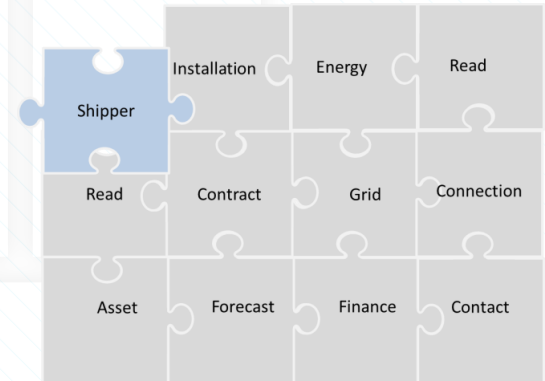
- An online BI portal for Shippers to access AQ information
- Providing Shippers with visibility of MOD672
- To produce a set of pre-defined dashboards for AQ topics
- Applies AQ view of No Reads and Read Performance (PARR topics)



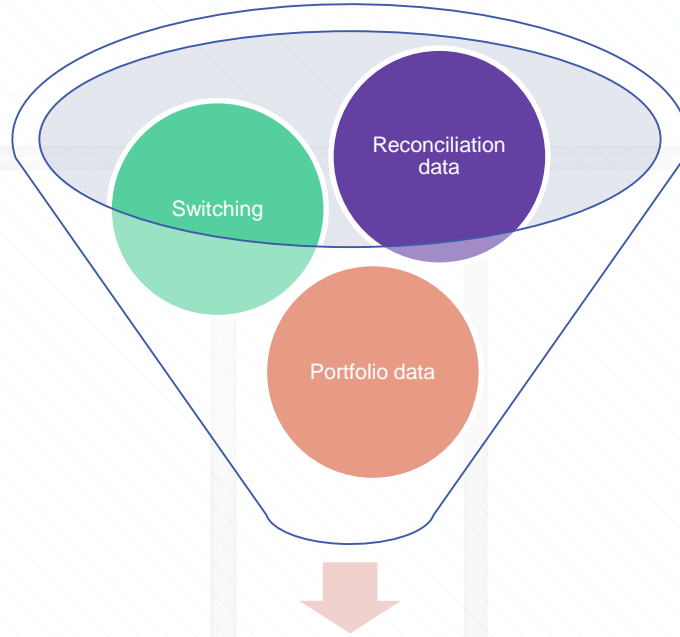
# Direction of Travel



- What are your priorities
- Is the direction of priority still correct
- How can we grow the product to answer the problems you need answering



# Backlog



User Stories



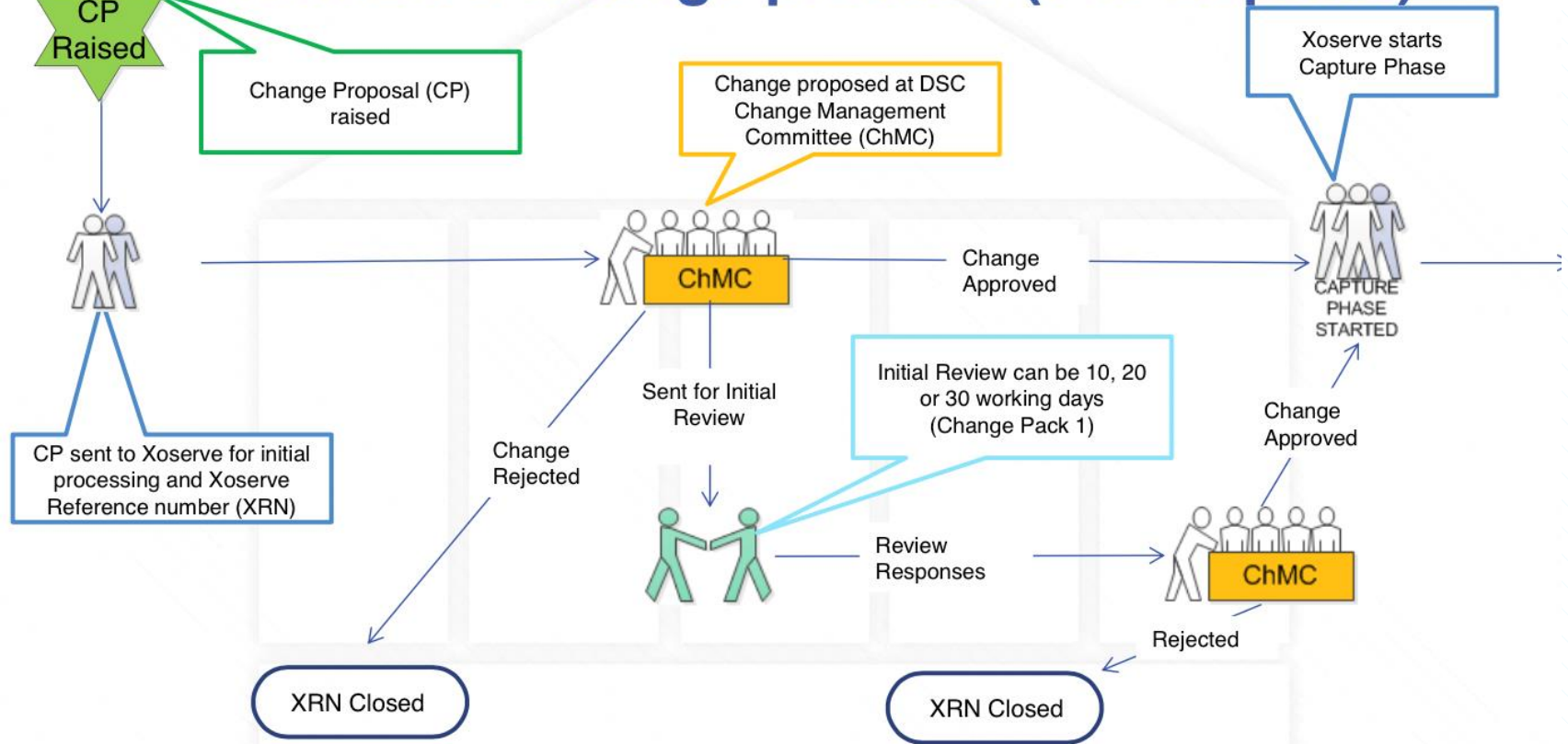
# **Data Services Contract (DSC) Customer Change**



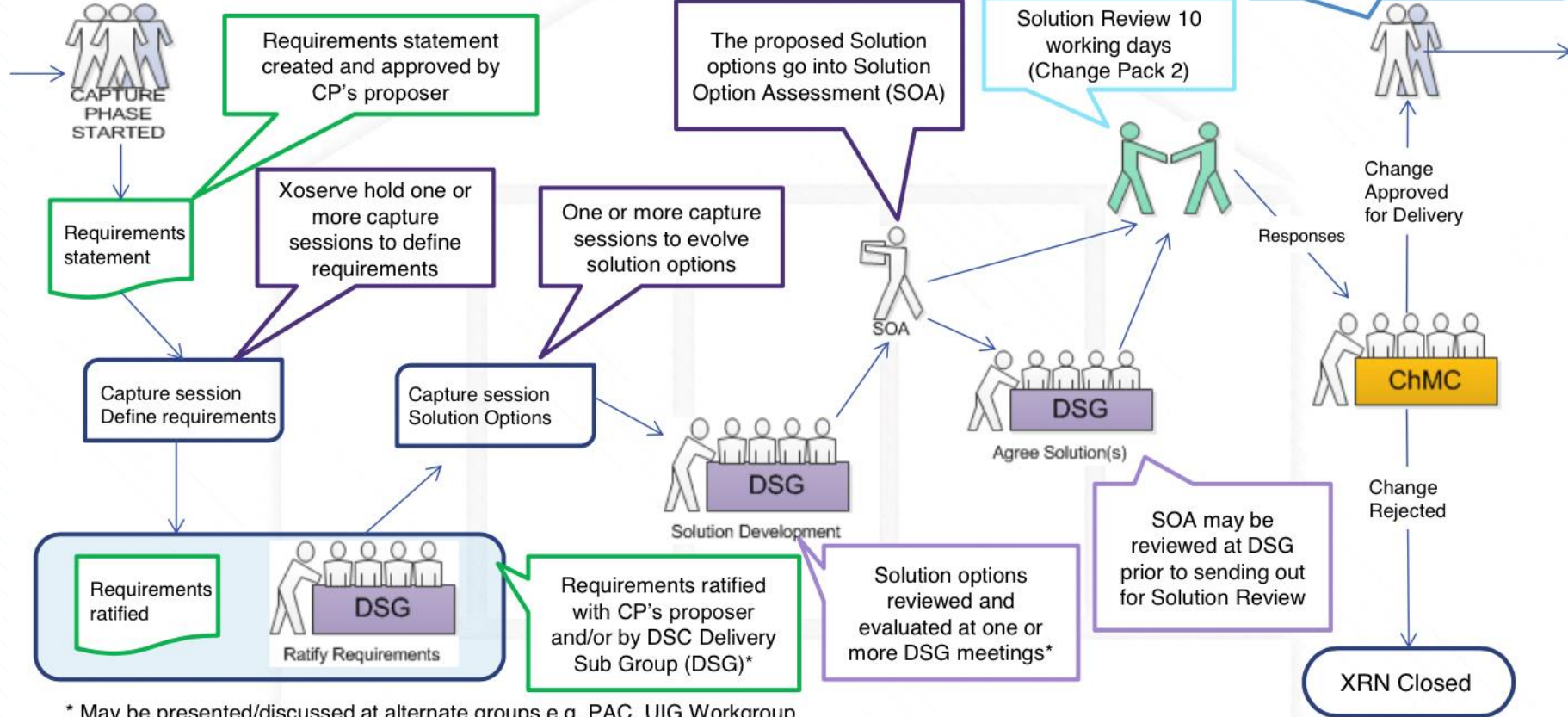
# Introduction

- ❖ The Customer Change Team sits within the 'Customer' department within Xoserve (headed by CCO Andrew Szabo)
- ❖ We are a bridge between you and the change delivery platforms within Xoserve (UK Link, Data, Minor Enhancements) helping to bring your ideas for change to life via the 'Capture' process
- ❖ Capture starts with a customer's idea for a change to the central systems or processes, sometimes via modifications to the UNC and sometimes through direct contact (for ideas where code change is not required). We assist our customers by:
  - Developing requirements & potential solutions
  - Facilitating industry discourse around your ideas for change (Delivery Sub-Group or 'DSG', change pack distribution and collation)
  - Helping you navigate through Data Service Contract (DSC) governance procedure to ensure your change ideas receive the appropriate visibility (and scrutiny)
  - Assist the DSC Change Management Committee (ChMC) to manage the DSC Change Budget and deliver several major / minor releases each year per year

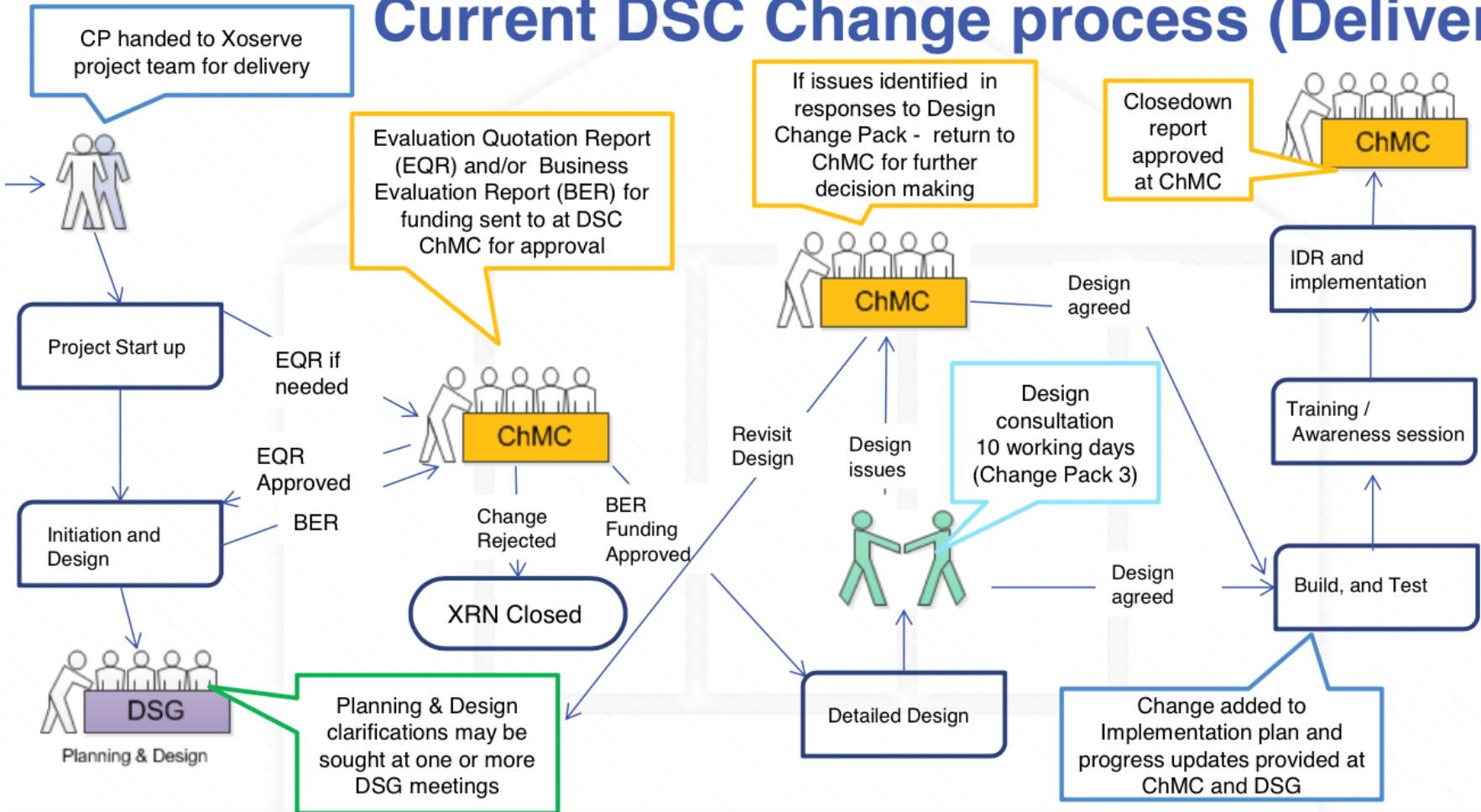
# Current DSC Change process (Pre-Capture)



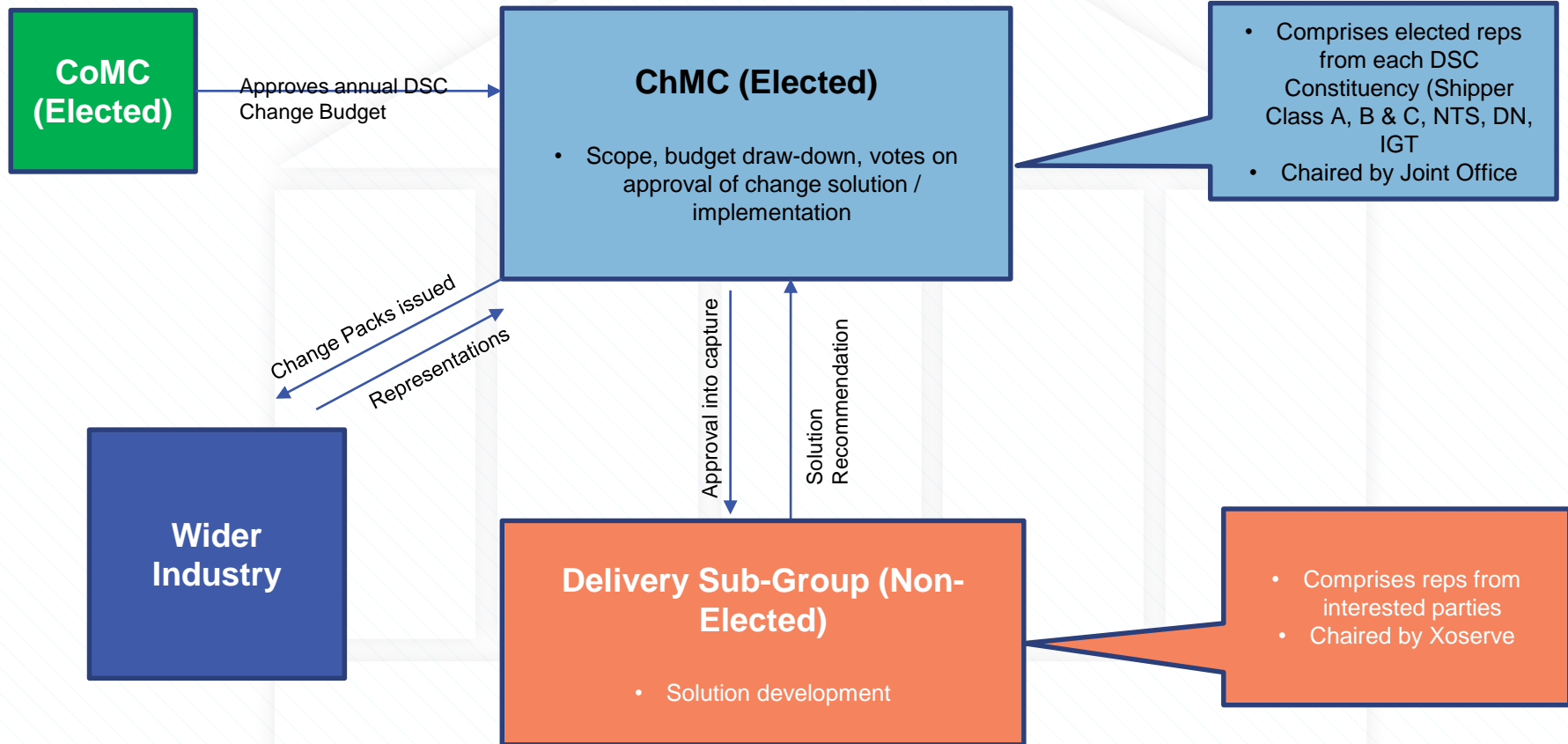
# Current DSC Change process (Capture)



# Current DSC Change process (Delivery)



# DSC Change Governance



# Changes in Scope for Delivery in 2020 (Major Release)

## June 2020 (XRN 4996)

- XRN4772 - Composite Weather Variable (CWV) Improvements
- XRN4888 - Removing Duplicate Address Update Validation for IGT Supply Meter Points via Contact Management Service (CMS)
- XRN4930 – Requirement to Inform Shipper of Meter Link Code Change
- XRN4850 - Notification of Customer Contact Details to Transporters
- XRN4865 - Amendment to Treatment and Reporting of CYCL Reads
- XRN4932 - Improvements to the quality of the Conversion Factor values held on the Supply Point Register (MOD0681S)
- XRN4780 (B)\*\*\* – Inclusion of Meter Asset Provider Identity (MAP Id) in the UK Link system (CSS Consequential Change) • MAP ID data load into UK Link is being planned for implementation during the PIS period

## November 2020 (XRN 5110)

- 4801 Additional Info in DES
- 4871b Ratchet regime changes
- 4897 Contact Details
- 4899 Contact Details
- 4931 Space in SPA Files
- 5014 Hydeploy trial
- 4941-MOD-692 – Auto Updates to Meter Read Frequency
- 4992 Supplier of last resort charge type

- Major releases are scoped in ChMC with capacity dictated by 't-shirt size' of each change (S = 5 points / M = 8 points / L = 13 points / XL = 21 points with each major release having a 120 points capacity) and other factors such as adherence to project delivery lead time & changing scope
- We also typically deliver 4 minor releases per year, populated with changes that don't impact our customers systems



# Changes In Capture

- The team is currently performing 'capture' on 193 changes (not inclusive of changes already in delivery). This includes 27 change proposals raised by various parties. **Of these, 19 are either fully or partly funded by the 3 (A,B,C) shipper constituencies:**

Change Category	XRN No	Change Title
Regulatory	4990	MOD0664 - Transfer of sites with low read submission performance
Regulatory	5038	MOD0691 - Class 2, 3 or 4 meter points to Class 1 when G1.6.15 criteria are met
Regulatory	5093	MOD0711 - Update of AUG Table to reflect new EUC bands
Regulatory	5167	MOD0672 - Report Product Class 4 Read Performance
Regulatory	5169	MOD0722 – Allow Users to submit Estimated Meter Readings during COVID-19
Regulatory	5170	MOD0723 – User of the Isolation Flag to identify site with abnormal load reduction during COVID-19
Regulatory	5171	MOD0724 - Amendment to Ratchet charges during COVID-19 period
Regulatory	5187	MOD0696v - Addressing inequities between Capacity booking under the UNC and arrangements set c
Regulatory	5144	Enabling Re-assignment of Supplier Short Codes to Implement Supplier of Last Resort Directions
Non-Regulatory	4876	Changes to PARR Reporting
Non-Regulatory	5120	Map to UK Link Comparison Service
Non-Regulatory	4645	Rejection of incrementing reads following Isolation (RGMA Flows)
Non-Regulatory	4860	National Temporary UIG Monitoring
Non-Regulatory	4978	Notification of Rolling AQ value
Non-Regulatory	5070	Amendment to Isolation Flag
Non-Regulatory	5072	Class 4 with AMR/DRE Installed
Non-Regulatory	5091	Deferral of creation of Class change reads at transfer of ownership
Non-Regulatory	5116	Domestic Report - Must Read Prenotification
Non-Regulatory	4923	AQ Calculation for RGMA (ONUPD) Estimate Reads

- Are there any views on priority order for the Non-Regulatory changes?

# Q&A

- What would you like to see in this update going forwards?

<https://www.xoserve.com/change/>



# Gemini Re-Platforming

## **Gemini Re-Platforming**

As part of Gemini Re-platform, the Gemini system is going through an Infrastructure Upgrade and also moving to private cloud based model (virtualised infrastructure). In order to continue to support the Gemini system, a number of software's are being upgraded to ensure compatibility with the Private Cloud based model. This upgrade is required to :

- Maintain software support for all Gemini components
- Meet industry best practices

While there are no functional changes to the systems in relation to this change, users accessing the system should note the following visible changes that can be found [here](#)

## **Extended Outage**

**There will be an Extended system outage on Sunday 5th July 2020 to support implementation activities.** The extended outage window is currently anticipated to be between 8 to 12 hours. Details as follows:

- Gemini Maintenance Window: 03:00 to 5:00

- Extended outage: 05:00 to 13:00

- In the event of a rollback an additional outage will be required from 13:00 to 17:00

Implementation planning is currently underway, any actions required from the external users to complete their system related activities and processes prior to the implementation day will be communicated via industry communication nearer the time.

## **Functionality**

The Gemini functionality will remain exactly the same along with how Industry participants interact with the system. Therefore, apart from the Citrix login, the look and functioning of Gemini will remain

# Slido

To ensure we capture the views and comments from everyone, we will be using the tool 'Slido' we will be asking the below 3 questions at the end of the meeting;

- How useful did you find the meeting? (1 - not useful at all) (5 - extremely useful)
- Would you attend another meeting in the future, and how often do you think we should host the meeting?
- What would you like to see in a Shipper Constituency in the future?

You can join via a web page, google 'Slido' and enter **Event Number #68044**

Alternatively, you can download Slido to your mobile phone via your App Store. Enter **Event Number #68044**

# AOB
