



# Gemini Sustain Plus Focus Group

25 September 2023  
1pm - 3pm

In partnership with



# Agenda

---

Introduction to Gemini Sustain Plus Programme • Chris Gumbley (National Gas), Emma Smith (Xoserve)

---

Gemini Sustain Plus Programme Roadmap and Timeline • Vibin Vasudevan (Wipro), Rachel Addison (Correlia)

---

Gemini Sustain Plus Programme Benefits • Bill Goode (National Gas)

---

Gemini Sustain Plus demonstration – modernising the user experience • Maneesh Dharmarajan (Wipro)

---

Questions and feedback – from Q&A • Mark Barnes (National Gas)

---

Next steps and key messages from today • Chris Gumbley (National Gas)

---

# Senior Leadership Team



**Chris Gumbley**

Head of Product Management



**Andy Simpson**

Change Director



**Vibin Vasudevan**

Programme Director



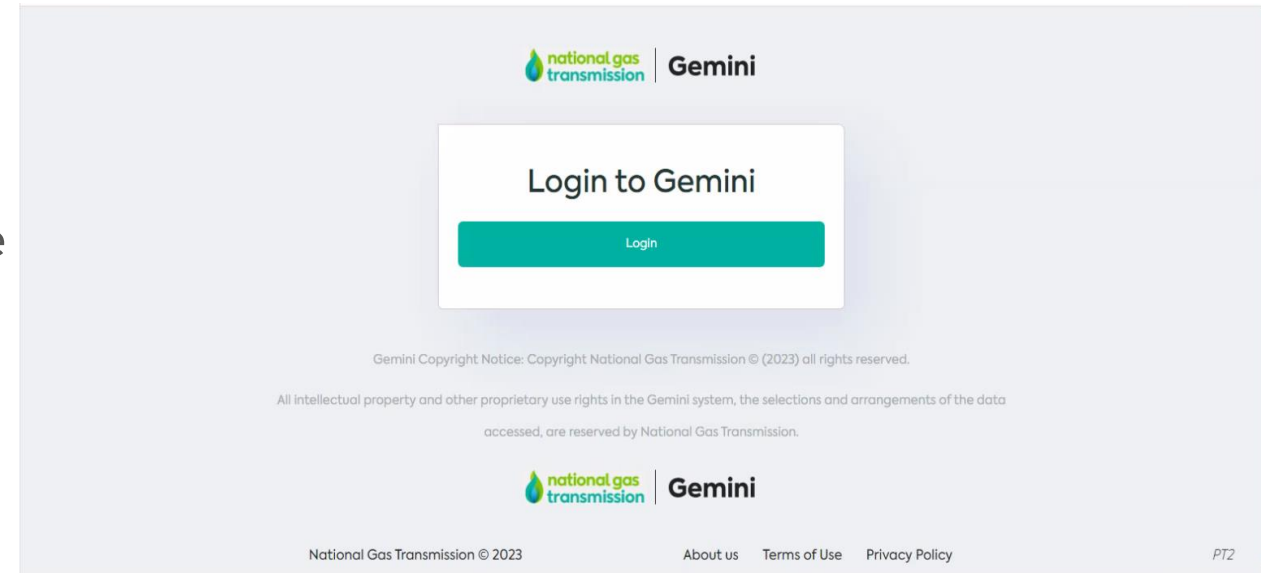
**Emma Smith**

Head of Change & Delivery Assurance



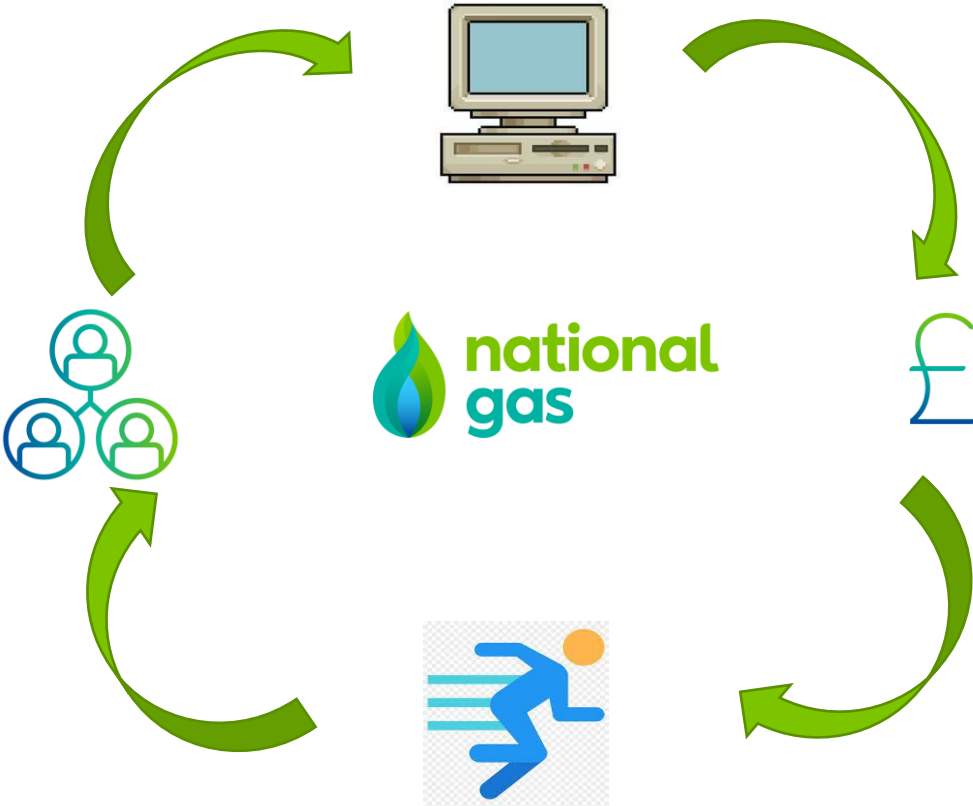
# Gemini Overview

- Gemini is a Capacity and Balancing platform that underpins the Gas Markets
- The key processes to do this are defined in the UNC:
  - Entry and Exit Capacity Management
  - Entry and Exit Capacity Trading
  - Commercial Energy Balancing
  - Billing
- Revenue is managed for National Gas via the following Invoices which are issued by Correla on our behalf via UK Link:
  - Entry and Exit Capacity Invoicing
  - Balancing Invoicing



# Gemini – the case for change

**AGE** - Gemini platform is now almost 20 years old, and the technology base has fallen behind the market in terms of flexibility and cost to run



**CUSTOMER** – We want to deliver benefits for our customers, stakeholders and ultimately consumers

**COST** - Managing Gemini change is more difficult and expensive than more modern platforms

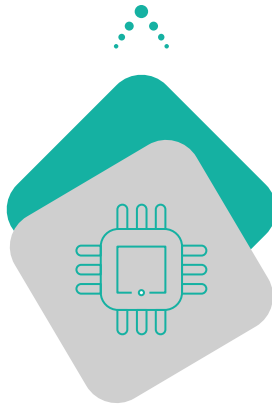
**AGILITY** - The pace of market changes is increasing and Net Zero drivers such as hydrogen will require us to be more agile.

# What is Sustain Plus?

Modern Platform (Azure Cloud)



Web APIs



One Platform (Gemini & Exit)



24\*7 Availability



Microservices

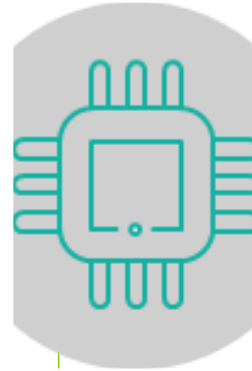
Secure

Multi- Device

# What are the impacts?



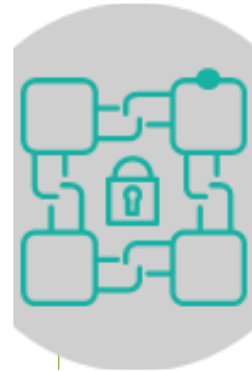
**New login URL**  
**New User ID**



**A change to the API URLs**



**A new user interface**  
**Upgraded menu system**



**Improved and upgraded security**



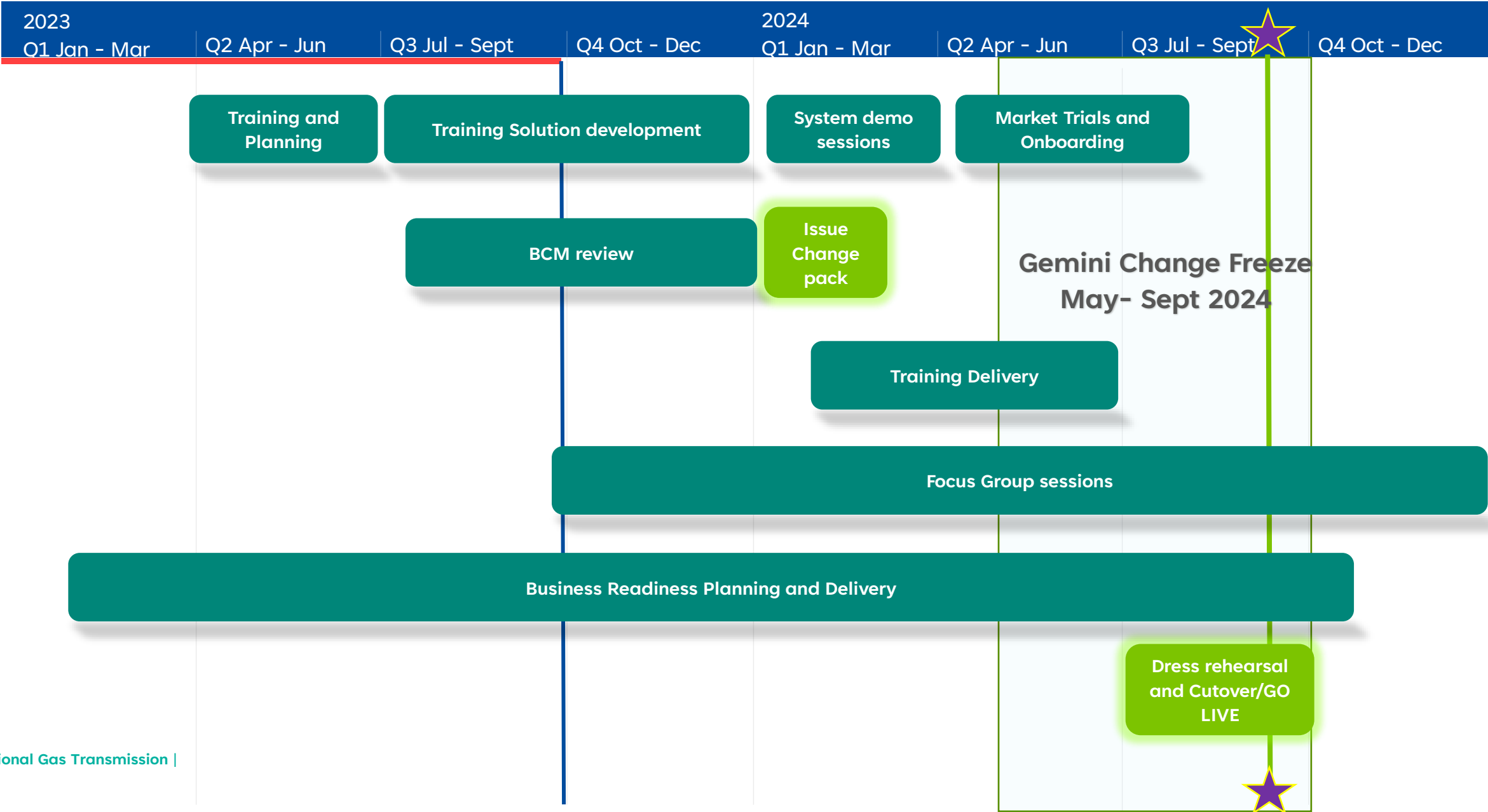
# Roadmap and Timescales

Rachel Addison (Correlia), Vibin Vasudevan (Wipro)





# Gemini Sustain Plus Timeline



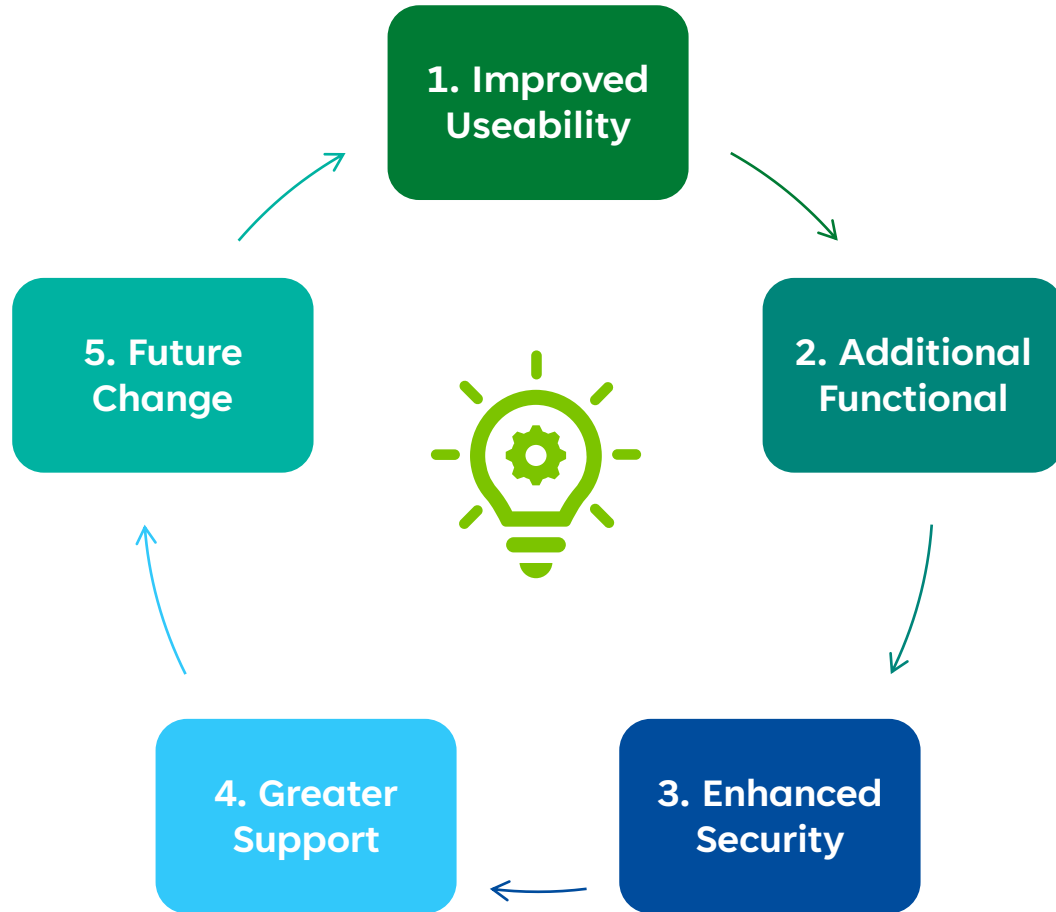


# Gemini Sustain Plus Programme Benefits

Bill Goode (National Gas)



# Gemini Sustain Plus Benefits



- Fresh modern user interface, easier and more intuitive to navigate
  - Personalise your dash-boards and landing screen
  - More user-friendly screens and navigation
  - Alleviation of 'pain-points' (e.g., combining Entry & Exit)
- Available 99.9%, 24 x7 (removal of the daily maintenance window)
  - Additional API offering
  - Improved system notifications
- Single login portal
  - Federated security
  - Latest cyber defence capability
- Improved support service
  - Brand new easy to use training package
- Built with future change in mind utilising Azure Microservices
  - Enable future market change to be delivered simply and efficiently through BAU processes



# Gemini Sustain Plus Demonstration

Maneesh Dharmarajan (Wipro)





# Q & A - Teams

Mark Barnes (National Gas)





# Next Steps

Chris Gumbley (National Gas)



# Industry engagement is critical

## Why engage?

- Early realisation of the benefits of the updated platform
- Ensure connectivity between the updated platform and your systems
- Ensure all Users are set-up and trained correctly (new User IDs for all users)



## How can you engage?

- Future Focus Groups throughout next 12 months covering technical, functional and training material
- Market Trials period to test technical connections are working
- Brand new interactive training package
- Updates planned at other at industry forums.

# Next Focus Group



The next Gemini Sustain Plus Focus Group meeting is planned for **Monday 20 November 2023**

This will be a virtual meeting and will include more demonstrations of the updated Gemini Platform

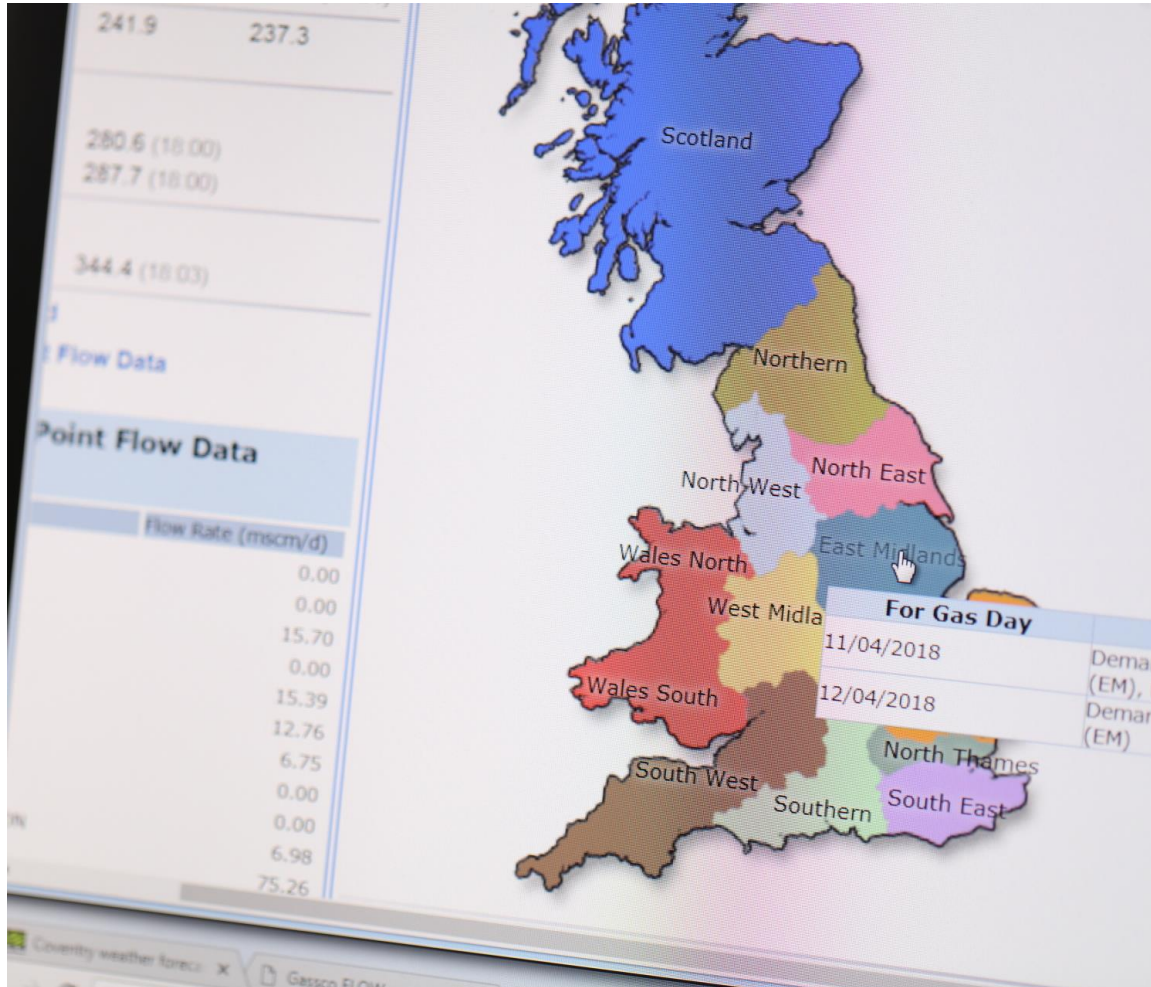
Your views are **important** to us, please take the opportunity to feedback and provide your views through the Q&A

We'd love to hear your views on:

- How you think today's session went?
- What topics would you like to see covered at future events?
- Do you have any views on how frequently you would like these events?
- Are there any other industry forums you think we should be attending?



# Thank You



- All the information from today will be loaded on to our dedicated Gemini Sustain Plus Website:
  - <https://www.xoserve.com/change/investment-change/gemini-changes-overview/gemini-sustain-plus/>
- We will also update the Q&A captured today
- If you'd like to reach out to the programme directly, please use our box account: [Box.GeminiSustainPlus@nationalgas.com](mailto:Box.GeminiSustainPlus@nationalgas.com) and a member of the team will respond



**national gas  
transmission**